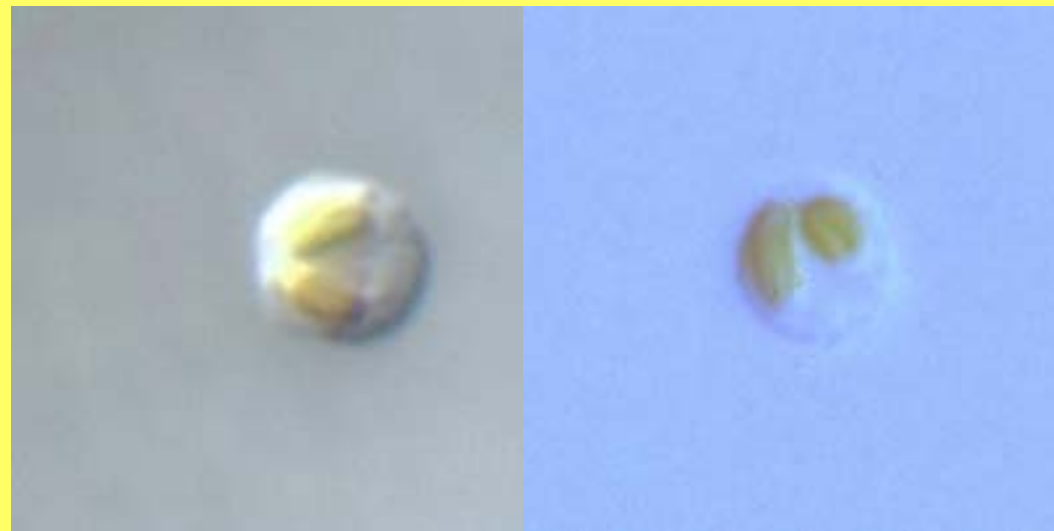


Florenciella ultra

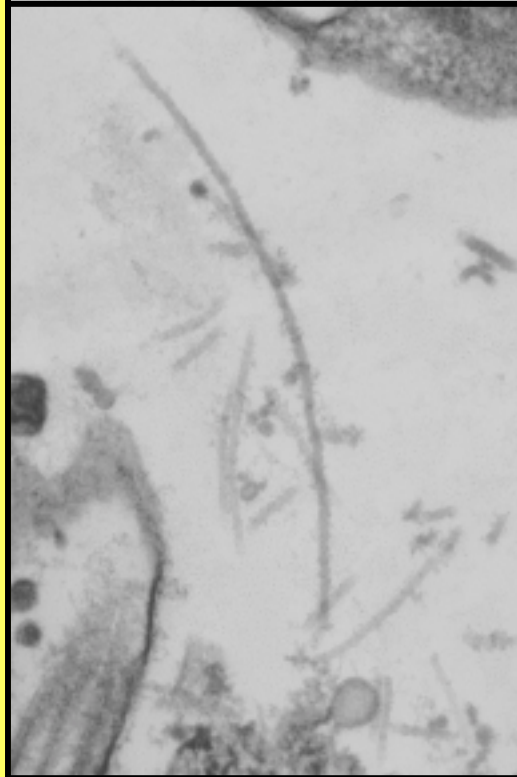
gen. et sp. nov.

Order dictyochales, Class Dictyochopyceae

LM of Florenciella



Fine-structure



2 flagella

long: 11-16 microns

short: 1-2 microns,

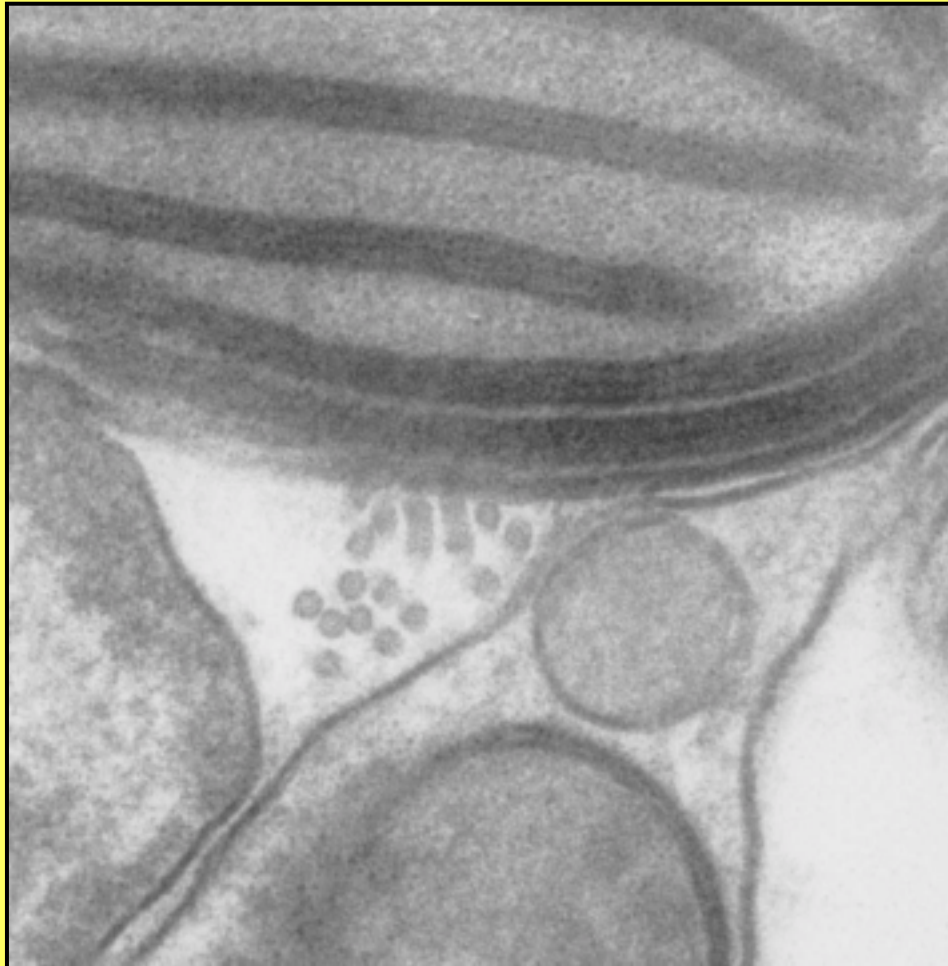
terminal hair 1-3 microns

flagella hair ca 1,5 microns

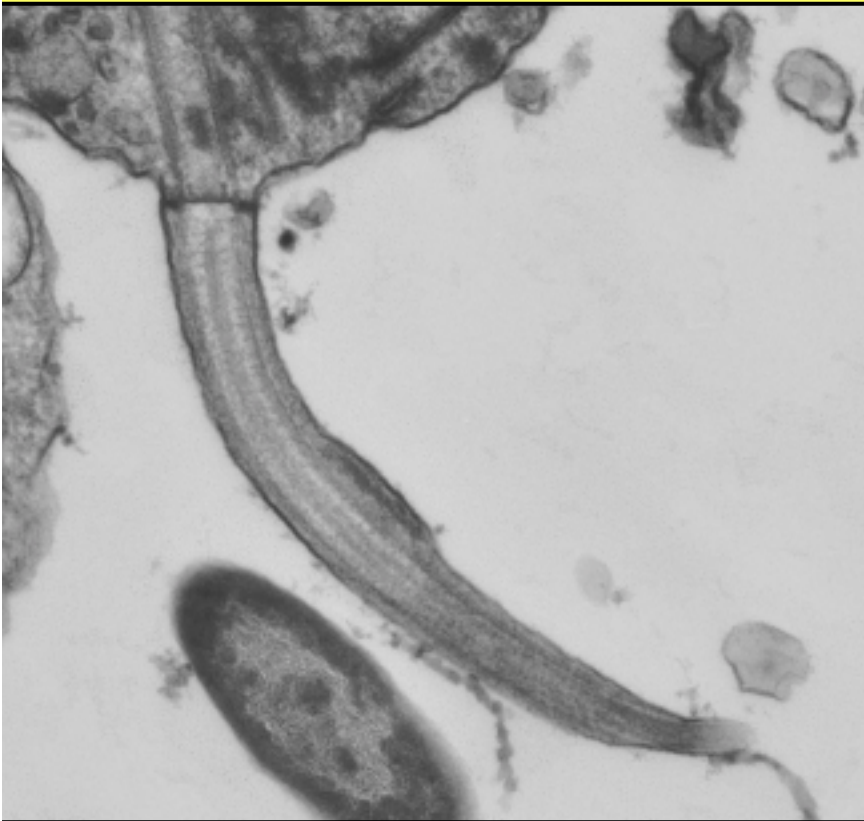
Cross section of cell



Chloroplast and the production of flagellar hairs



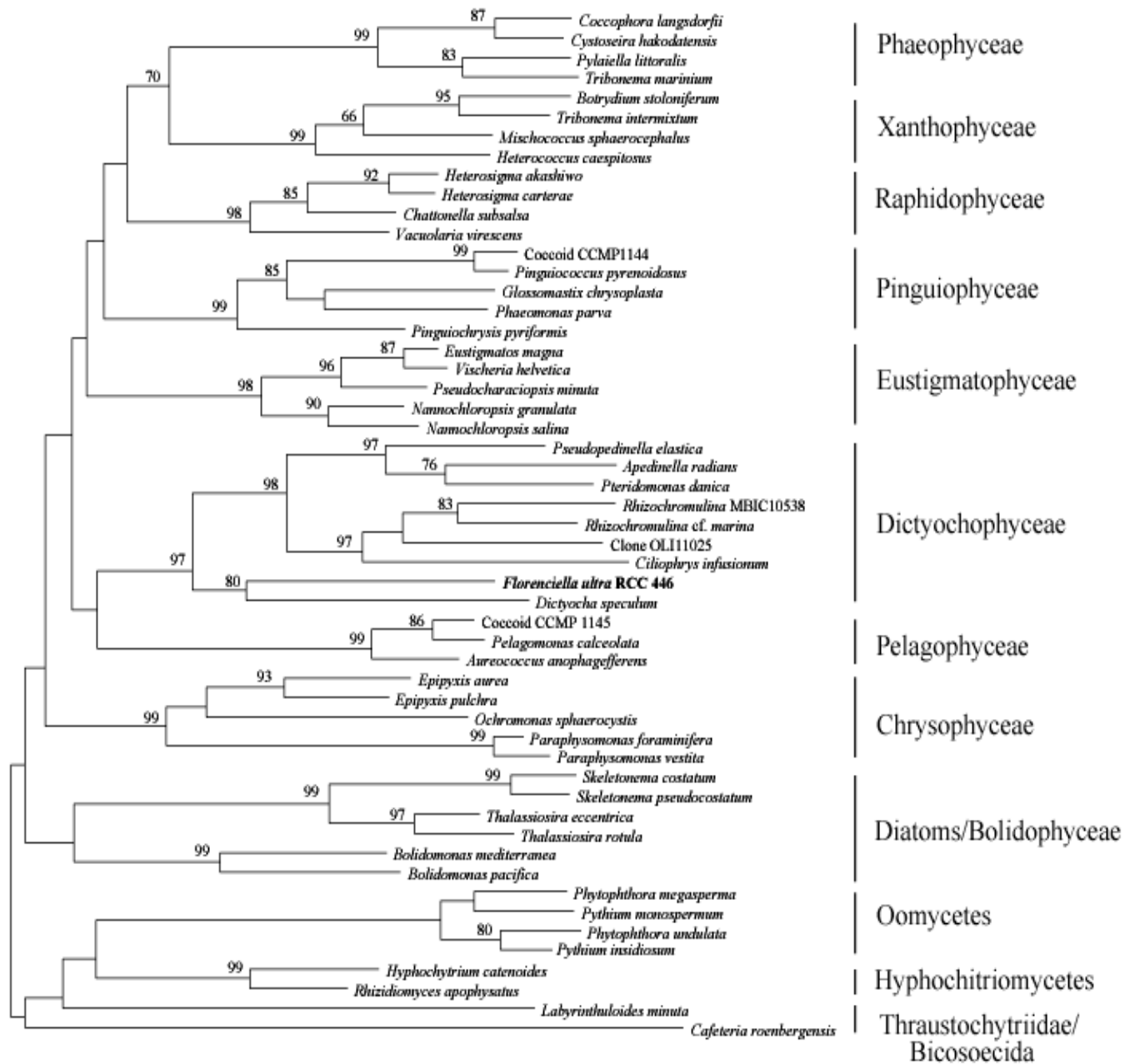
Short flagellum
with swelling

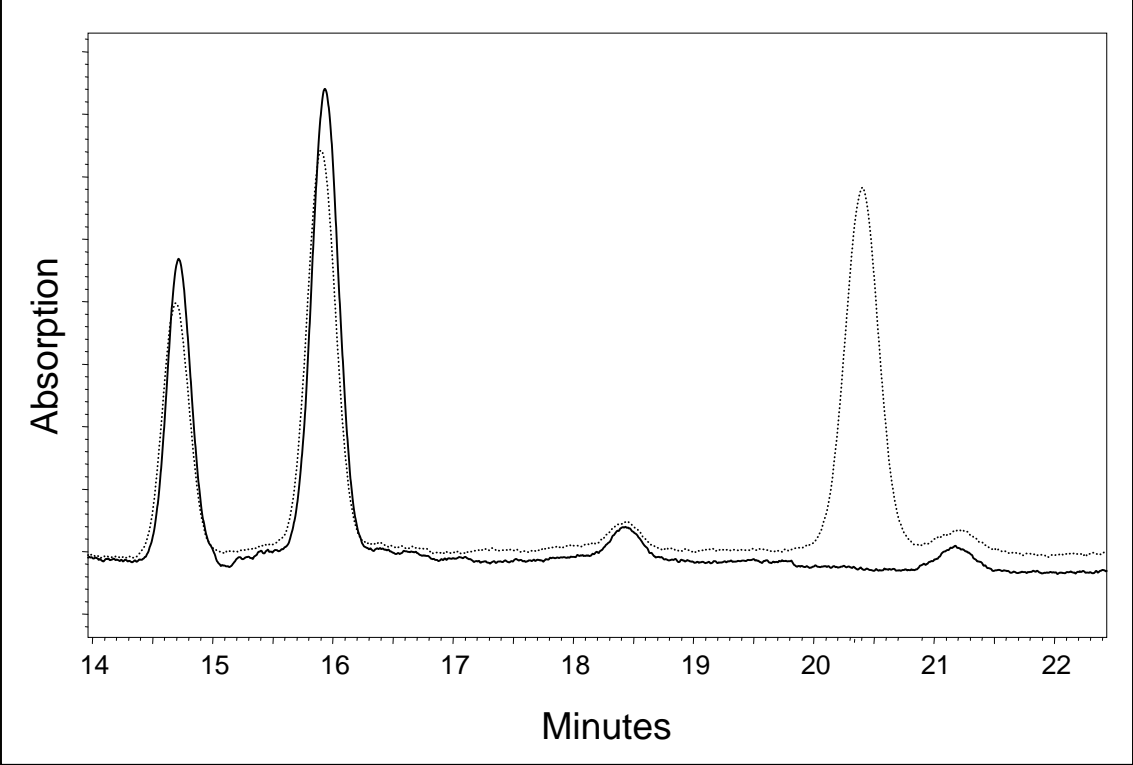


Depression of the nucleus
where the basal bodies fit

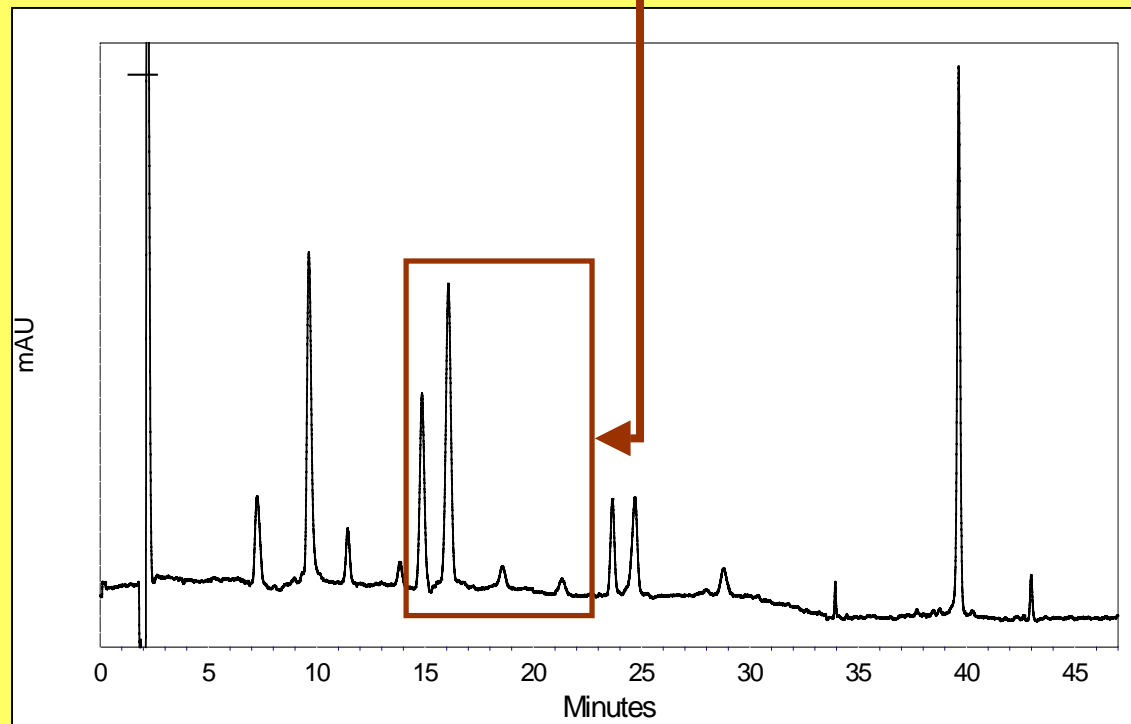
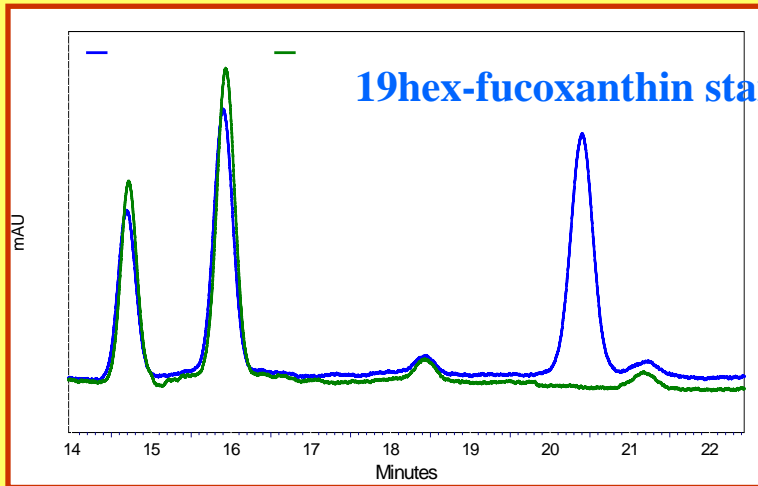


- **Two flagella**
- **Tubular hairs**
- **No microtubular roots**
- **Fiber roots**
- **2 gyre helix**
- **No rhizoplast**
- **Basal body in a depression of the nucleus**
- **Chloroplast with girdle lamella**
- **Outer chloroplast membrane**
continuous with nuclear membrane





19hex-fucoxanthin standard



	Genus	Fucox	19but	Order
	Florenciella	+	+	Dictyochales
RCC94 CCMP1253	Rhizochromulina	+	+	Rhizochromulinales
RCC392	“Rhizochromulina”	+	+	Rhizochromulinales
RCC389		+	+	
RCC382	Mesopedinella	+	-	Mesopedinellales

