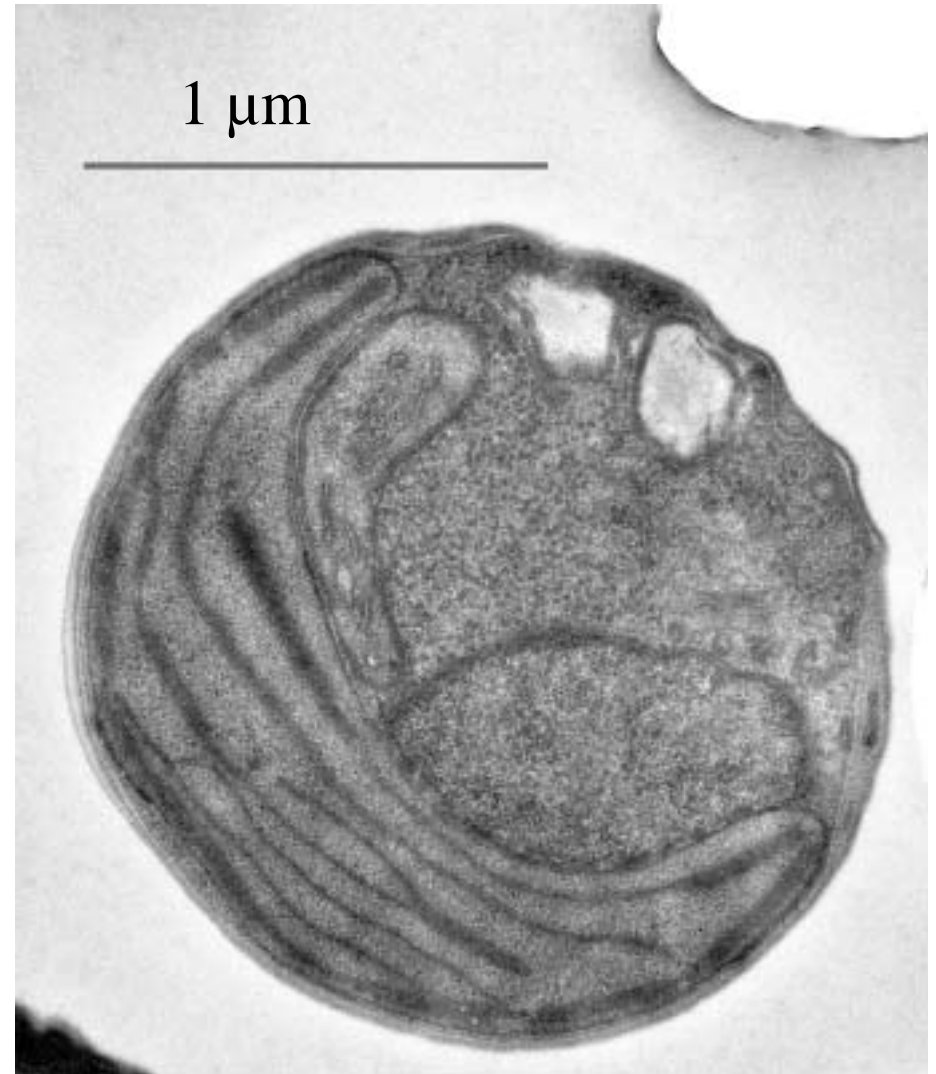
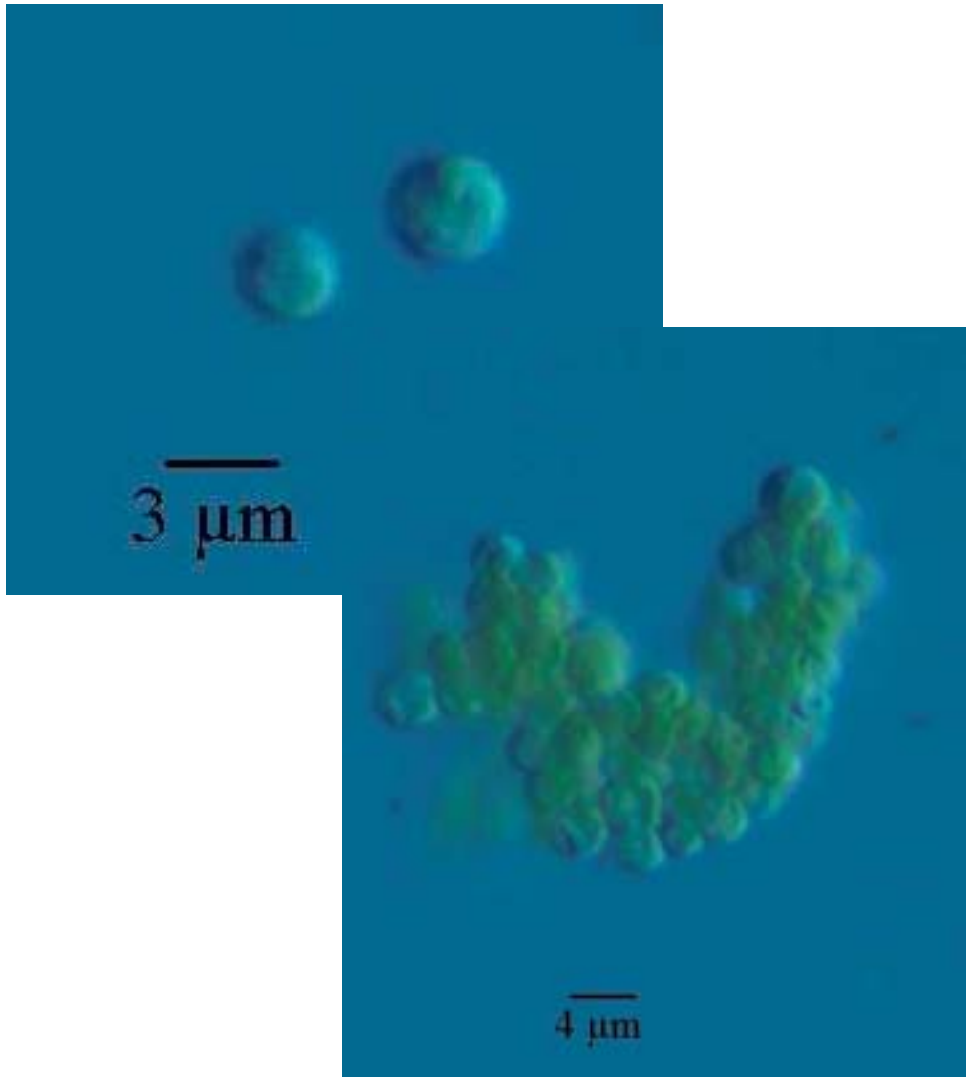


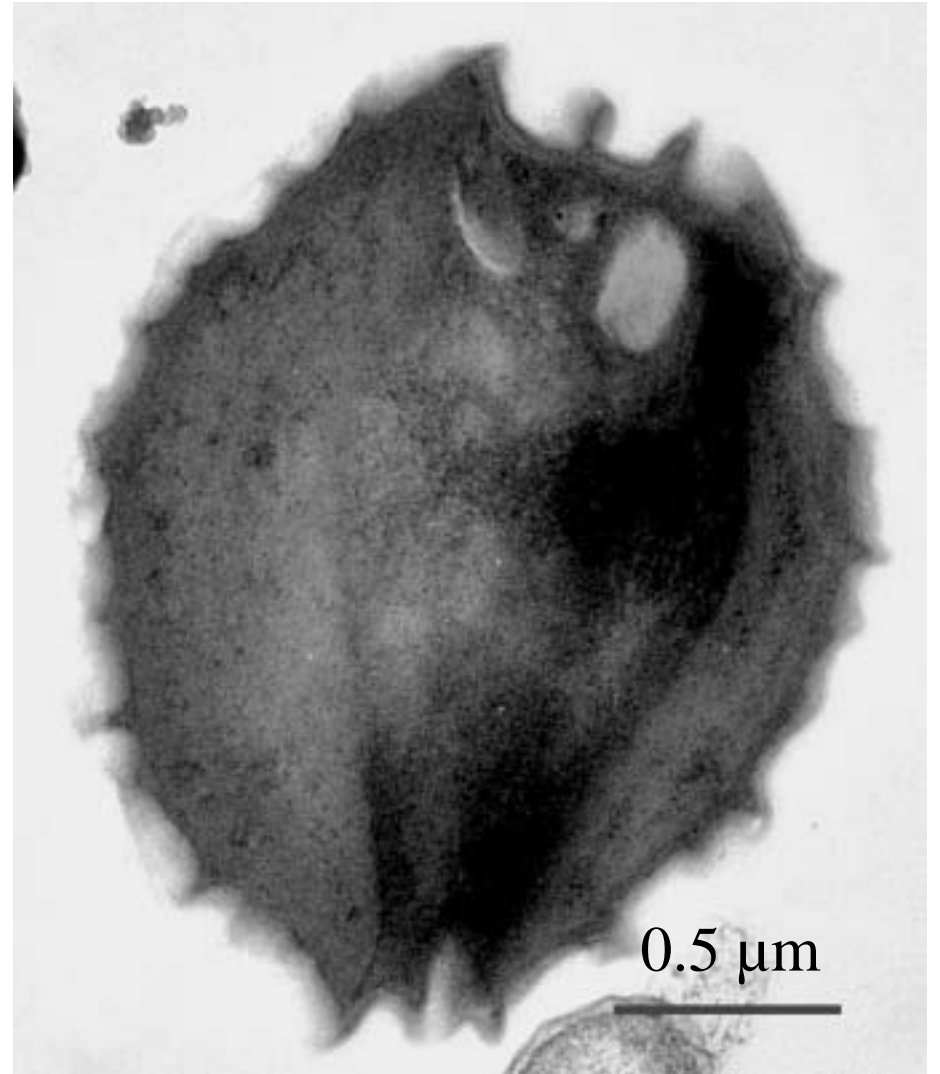
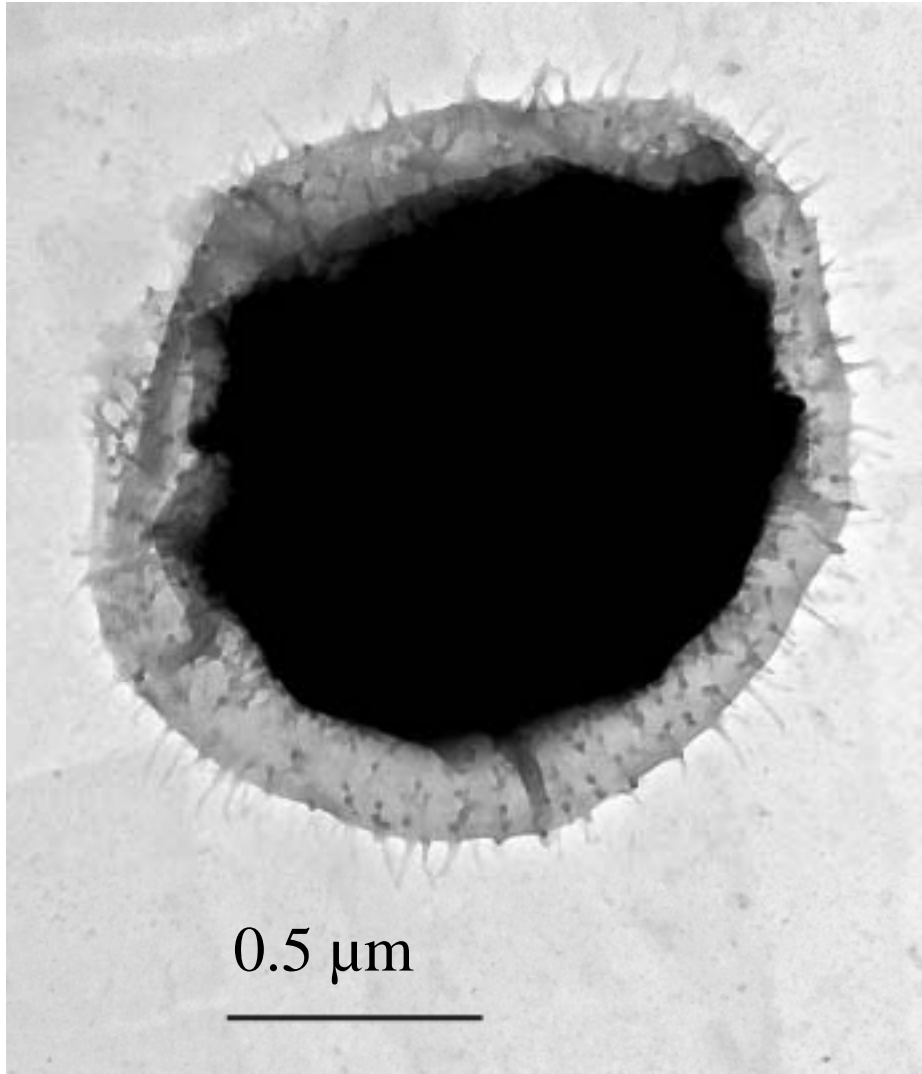
New species in the Roscoff culture collection

RCC 287

Isolated from Blanes by Laure Guillou



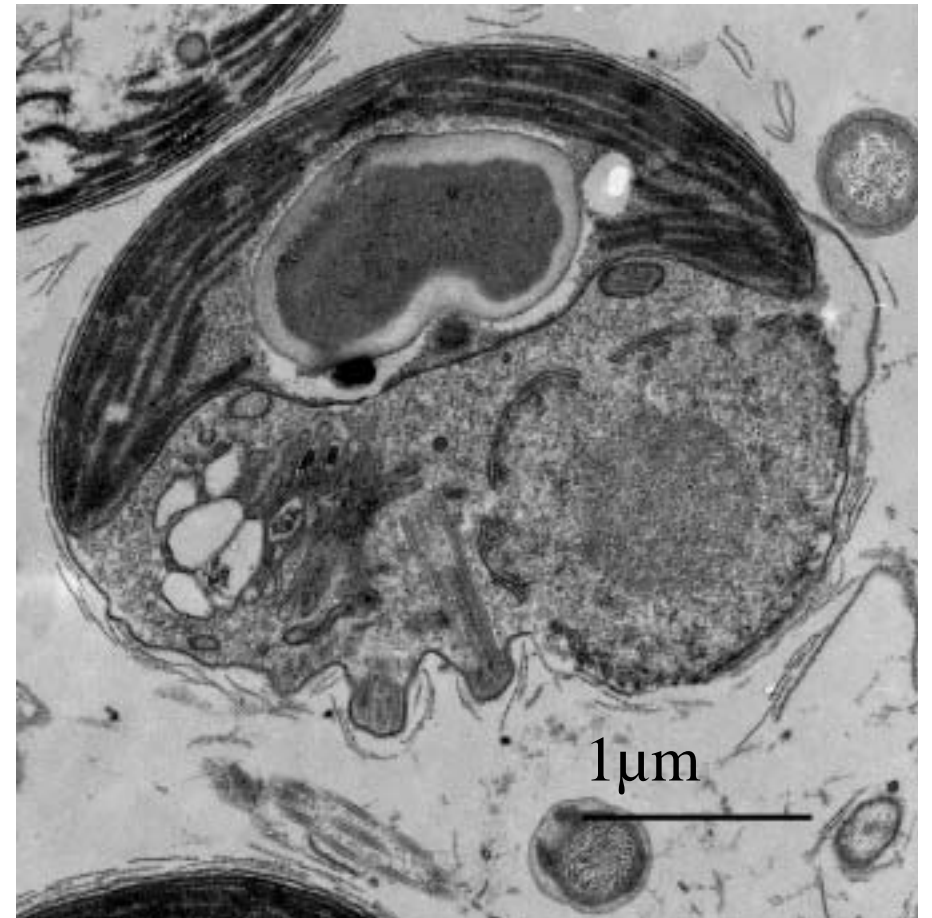
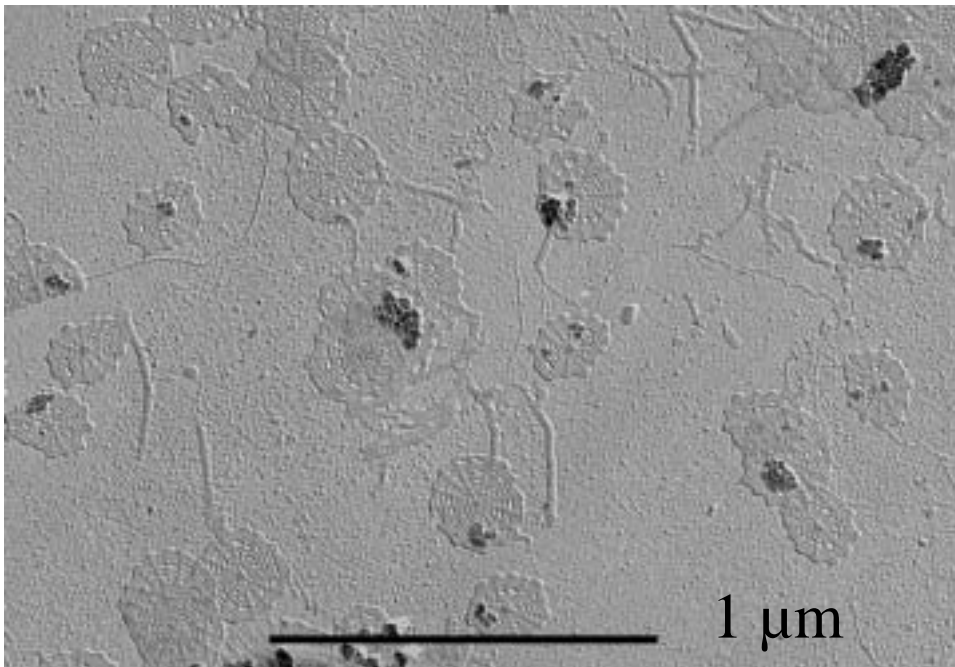
RCC 287



RCC 391

Isolated from Blanes by Laure Guillou

Prasinophyceae, Mamiellales



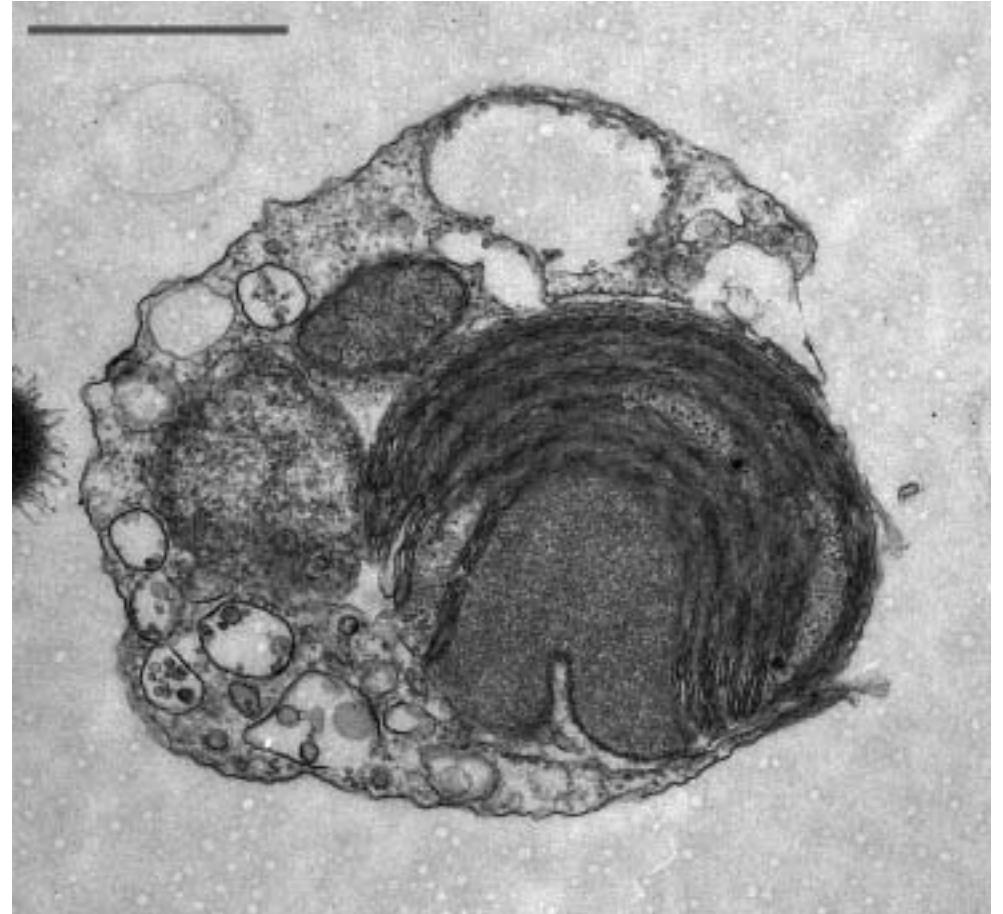
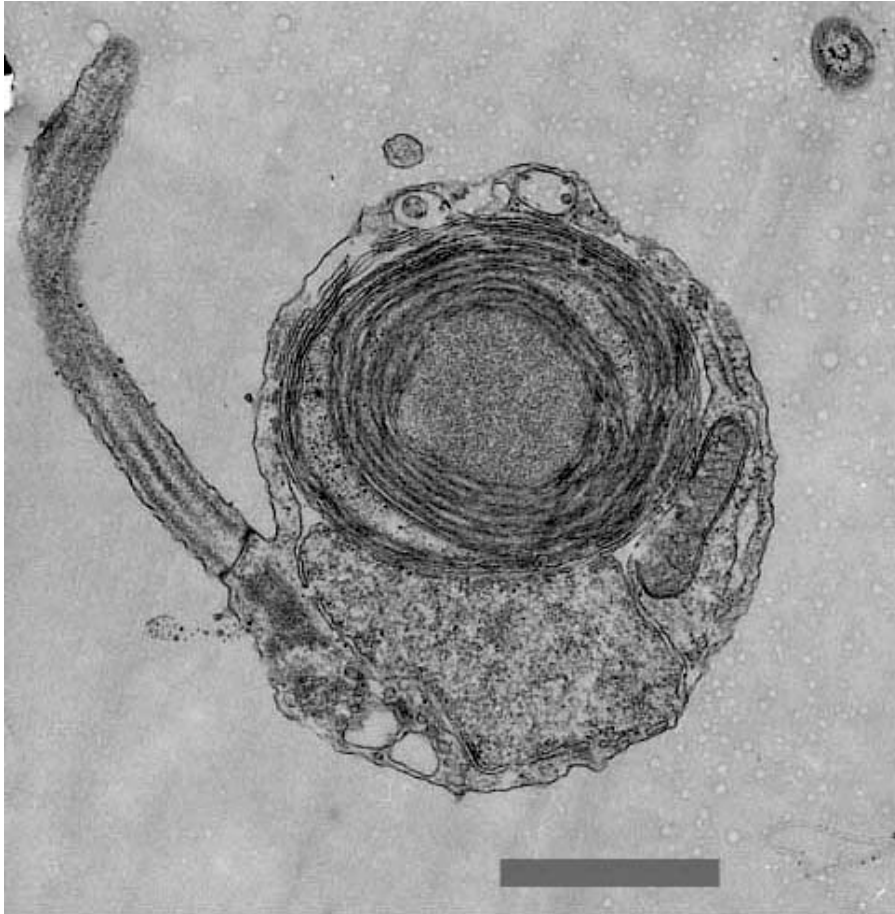
RCC 446

Florenciella ultra

Dictyochales, Dictyochophyceae

RCC 332

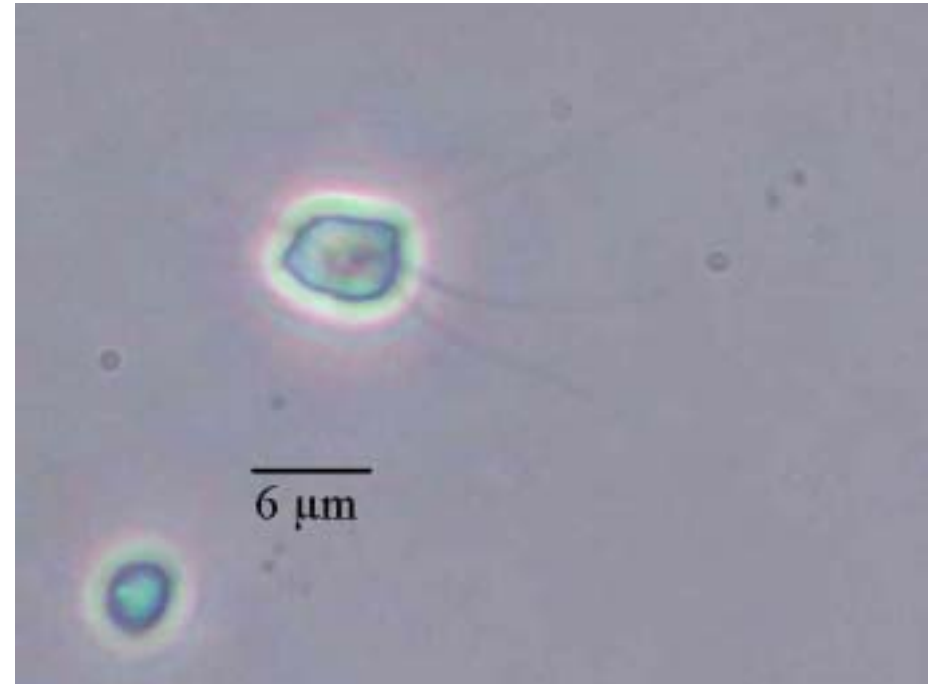
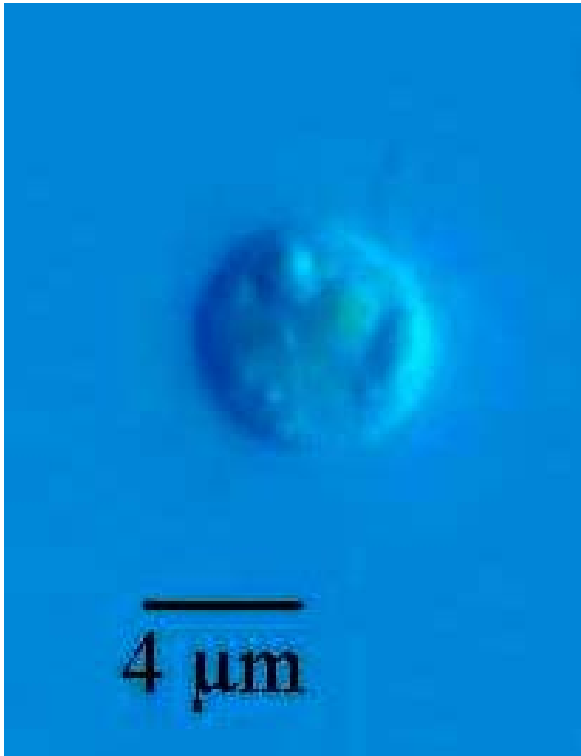
Isolated by F. Patrensky from the Mediterranean Sea



2-3 μ m, Dictyochophyceae. 1 long flagellum, (1 short ?)

RCC 392

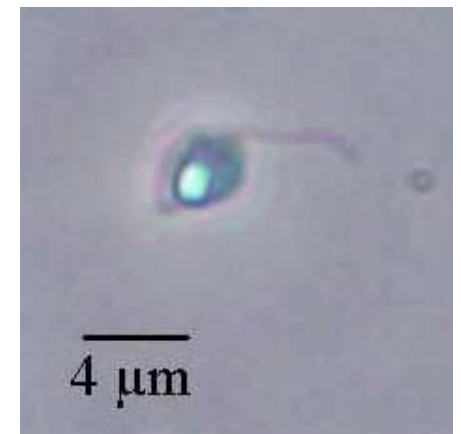
Isolated by F. Partensky from the Mediterranean



Similar to *Rhisochromulina*

1 short, 1 long flagellum,

1 chloroplast. Fluorescent spot on trailing flagellum

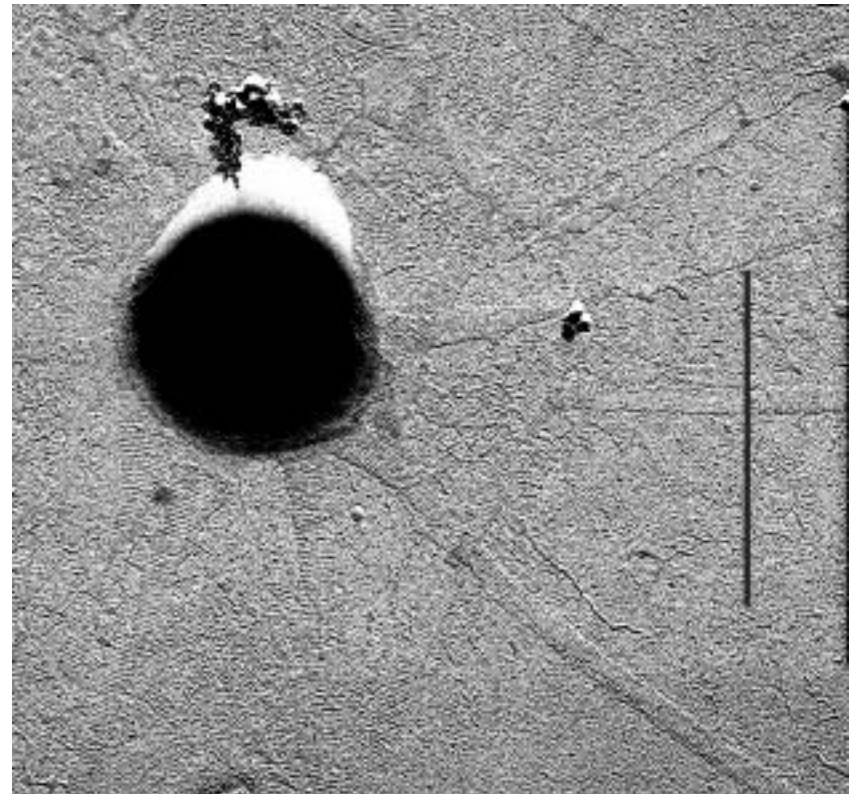


RCC 392

One chloroplast, long flagellum
with mastigonemes

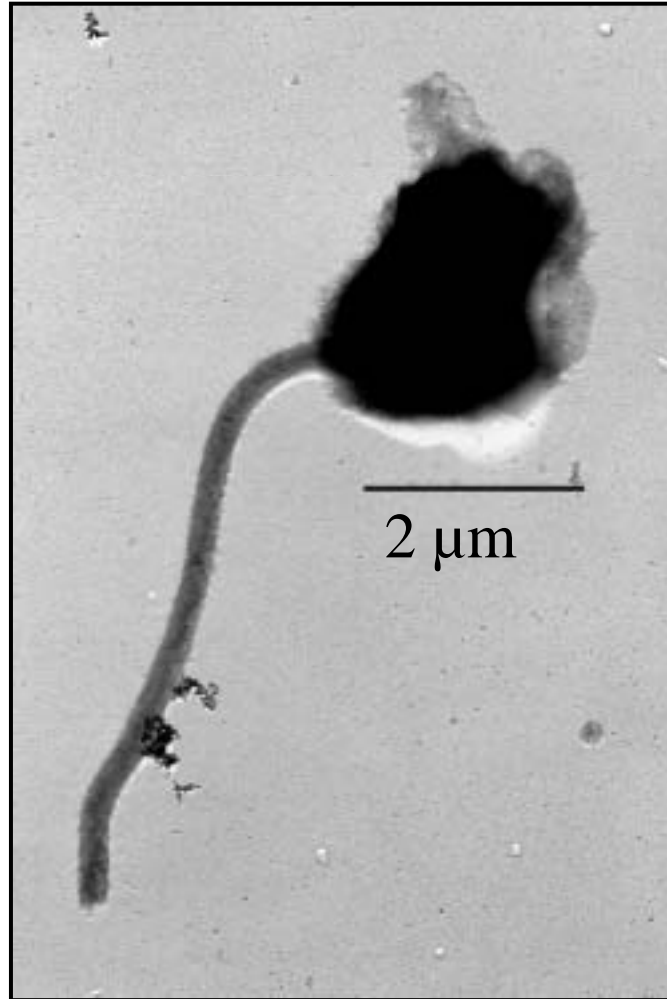


Photosynthetic bacterium?

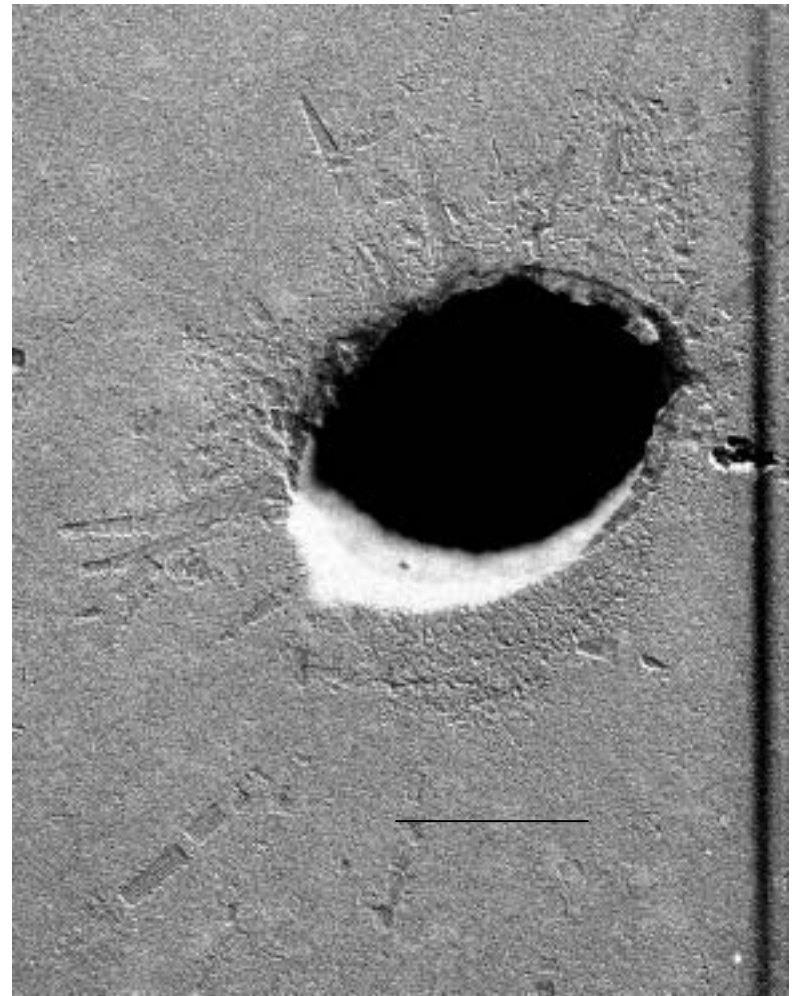


Paraphysomonas, a colorless chrysophyte (no picture)

RCC 386



Phototroph flagellate

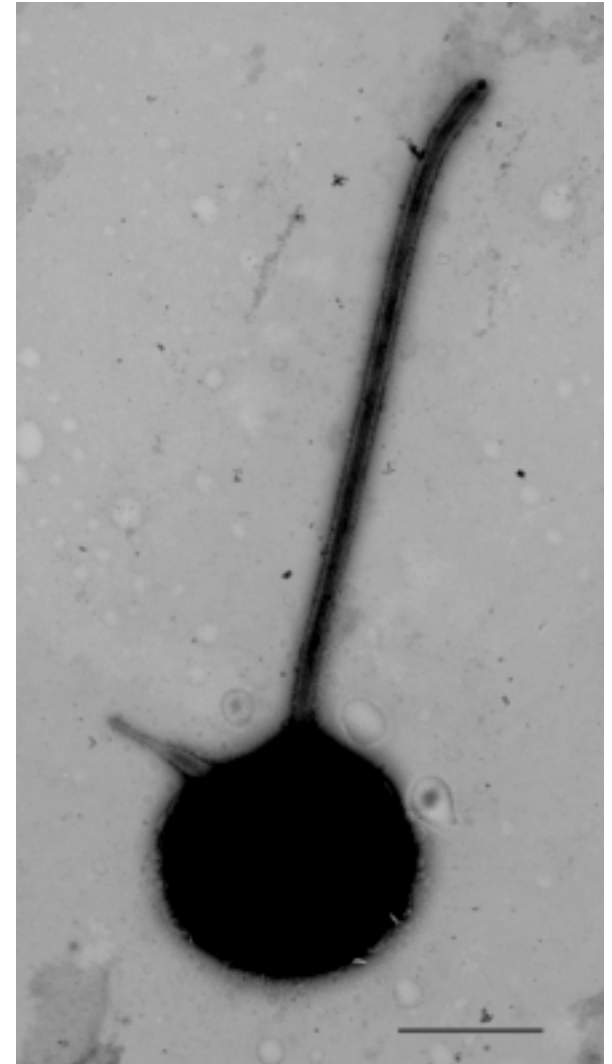
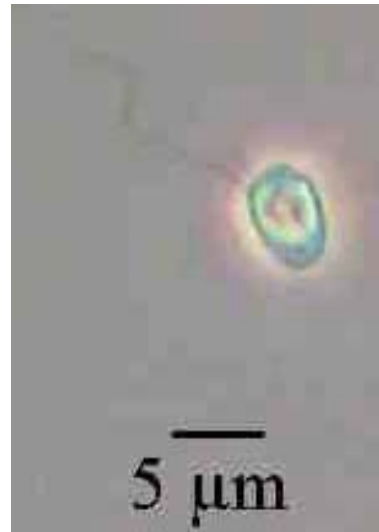
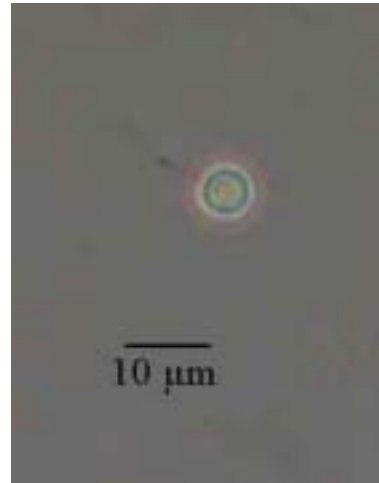
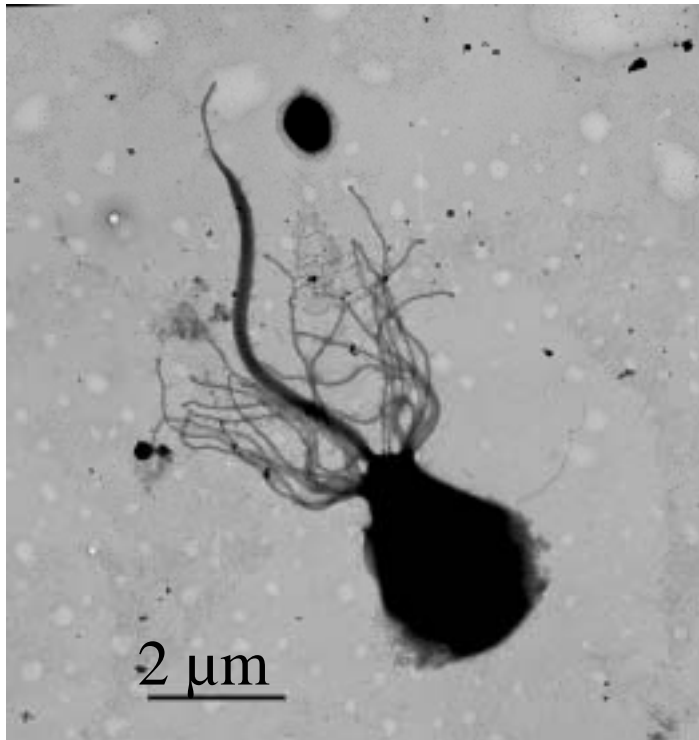


photosynthetic bacterium

RCC 505

Isolated from Blanes

Dictyochophyte



Similar to Florenciella, living with *Monosiga* cf. *micropelagica*

RCC 505

