

env.part.RA000412.83

Bathycoccus prasinus, [EBI] Chlorophyta; Prasinophyceae;

Prasinophyceae Pseudoscourfeld (9:0)

Prasinophyceae Pyramimonadales (14:0)

- Pyramimonas olivacea, Viridiplantae Chlorophyta
- Pyramimonas disomata, Viridiplantae Chlorophyta
- Pyramimonas parkeae, Viridiplantae Chlorophyta
- Pyramimonas propulsa, Viridiplantae Chlorophyta
- Pterosperma cristatum, Viridiplantae Chlorophyta
- Pterosperma cristatum, Viridiplantae Chlorophyta
- env.part.He000427.63*
- Cymbomonas tetramitiformis, Viridiplantae Chlorophyta
- Halosphaera sp. Shizugawa, Viridiplantae Chlorophyta
- coccoid prasinophyte CCMP1413, [EBI] Eukaryota; Viridiplantae;
- coccoid prasinophyte CCMP1193, [EBI] Eukaryota; Viridiplantae;
- Coccoid green alga CCMP1220, [EBI] Eukaryota; Viridiplantae; Chl
- Mesostigma viride, Viridiplantae Chlorophyta
- Mesostigma viride, Viridiplantae Chlorophyta

- Anthoceros agrestis, Plantae Embryobionta
- Anthoceros laevis, Plantae Embryobionta
- Fossombronina pusilla, Plantae Embryobionta

Charophyceae (16:0)

Spirogyra grevilleana, Plantae Thallobionta

Chlorophyta 1/ Conjugophyta (12:0)

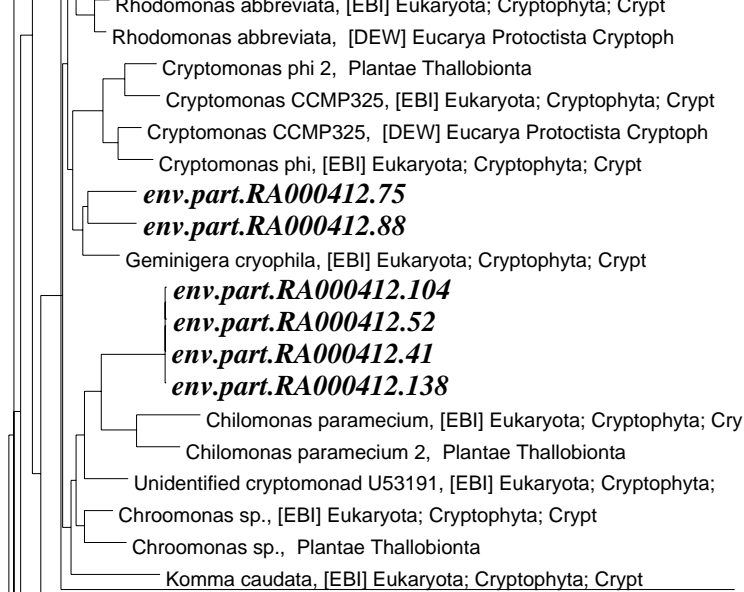
- Coleochaete scutata, Plantae Thallobionta
- Coleochaete orbicularis, Plantae Thallobionta
- Klebsormidium flaccidum, Plantae Thallobionta
- Klebsormidium flaccidum, Plantae Thallobionta
- Chlorokybus atmophyticus, Plantae Thallobionta


Rhodophyceae (119:0)

- Dixoniella grisea, Plantae Thallobionta
- Glaucosphaera vacuolata, Glaucocystophyceae Gloeochaetales
- Glaucosphaera vacuolata, Glaucocystophyceae Gloeochaetales
- Rhodella maculata, Plantae Thallobionta
- Erythrotrichia carnea, Plantae Thallobionta
- Erythrocladia sp., [DEW] Eukarya Protocista Rhodophy
- Boldia erythrosiphon, Rhodophyta Bangiophyceae
- Stylonema alsidii, Plantae Thallobionta
- Porphyridium aerugineum, Plantae Thallobionta


Cryptophyceae 1 (25:0)

- Rhodomonas mariana, [EBI] Eukaryota; Cryptophyta; Crypt
- Rhodomonas mariana 2, Plantae Thallobionta
- Rhinomonas pauca, [EBI] Eukaryota; Cryptophyta; Crypt
- Storeatula major, [EBI] Eukaryota; Cryptophyta; Crypt
- Pyrenomonas salina 2, Plantae Thallobionta
- Pyrenomonas salina, [EBI] Eukaryota; Cryptophyta; Crypt
- Rhodomonas abbreviata, [EBI] Eukaryota; Cryptophyta; Crypt
- Rhodomonas abbreviata, [DEW] Eucarya Protocista Cryptoph
- Cryptomonas phi 2, Plantae Thallobionta



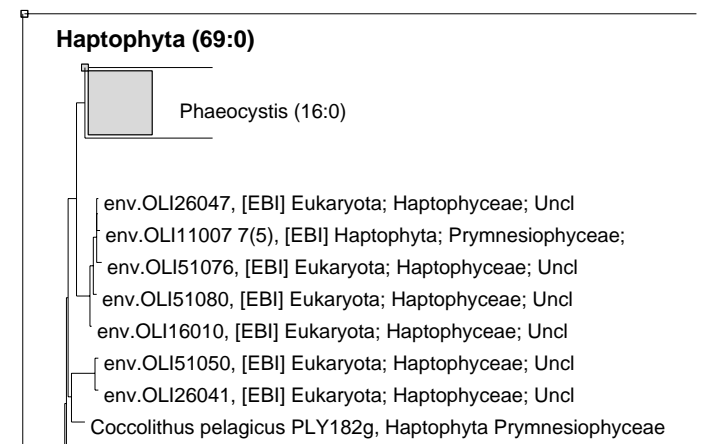
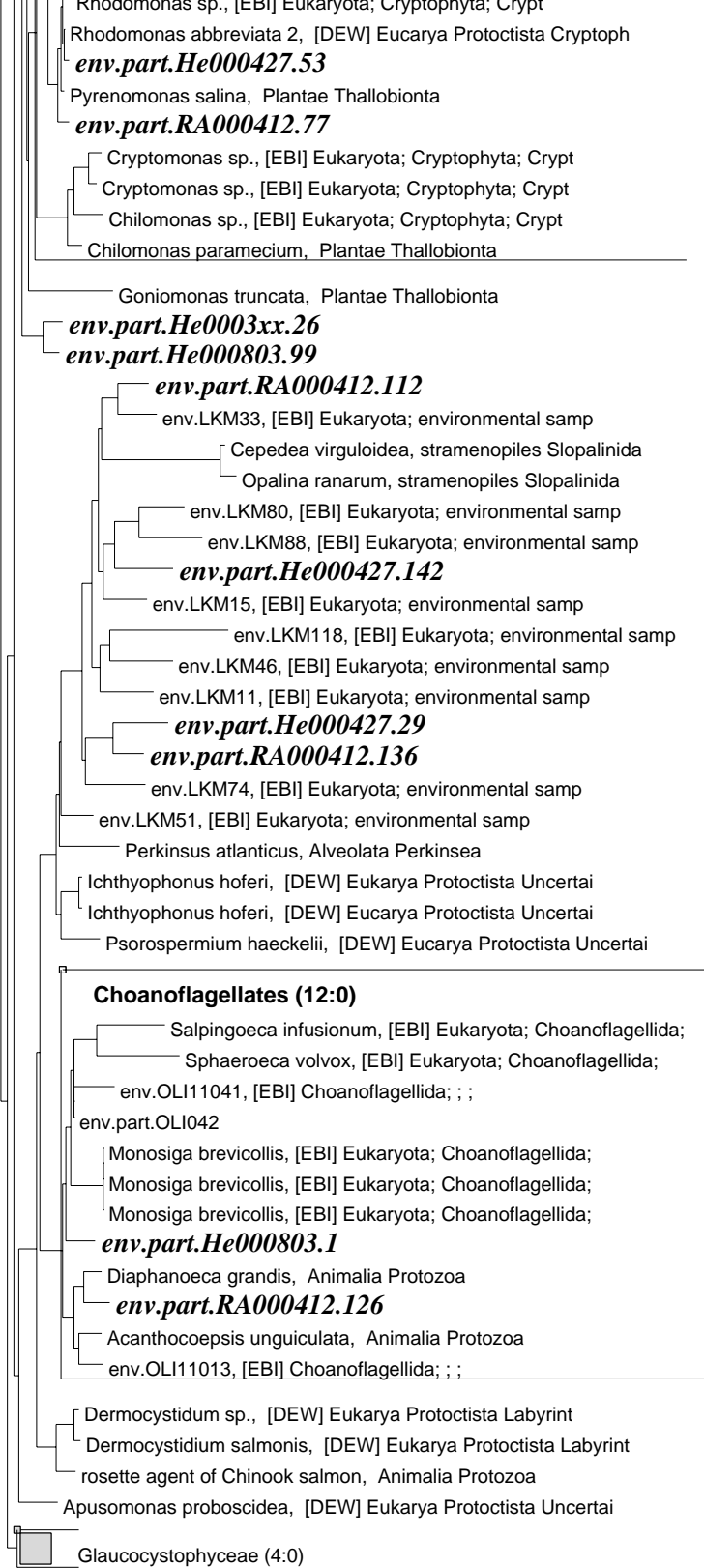
 Porphyra (12:0)

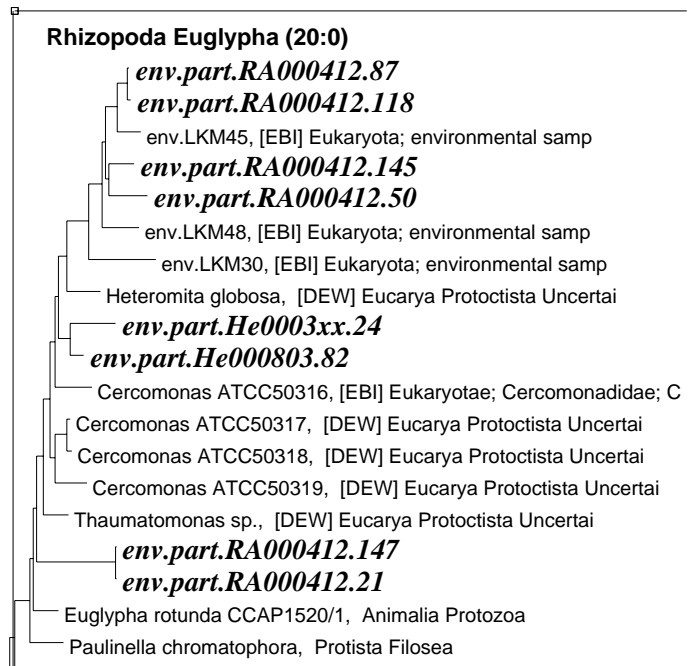
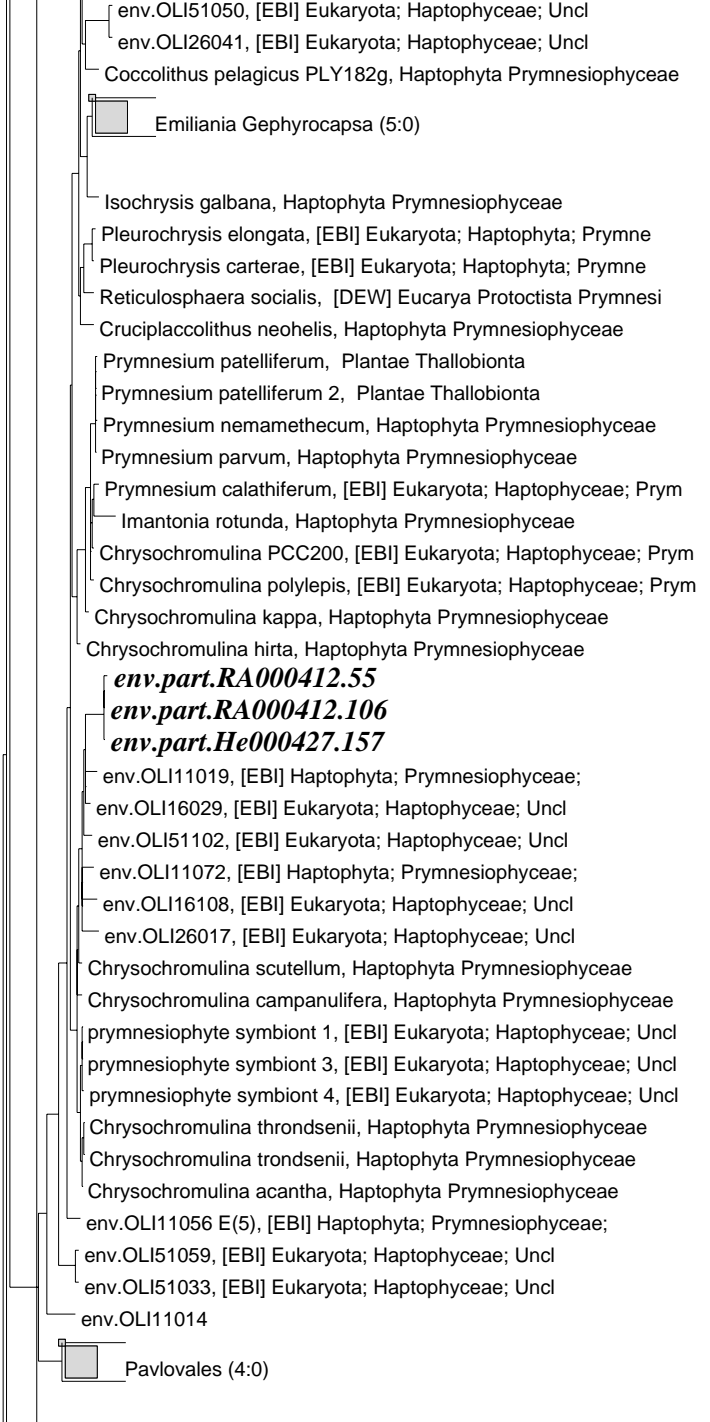
env.part.He000803.72
env.part.He000427.214
env.part.RA000412.151

 Acanthamoeba/ Hartmannella (65:0)

Cryptophyceae 2 (38:0)

env.part.RA000412.143
env.part.He0003xx.80
env.part.RA000412.49
 Falcomonas daucoides, [EBI] Eukaryota; Cryptophyta; Crypt
 Plagiomonas amylosa, [EBI] Eukaryota; Cryptophyta; Crypt
 Hemiselmis brunnescens, [EBI] Eukaryota; Cryptophyta; Hemis
 Hemiselmis rufescens, [EBI] Eukaryota; Cryptophyta; Hemis
 Hemiselmis virescens, [EBI] Eukaryota; Cryptophyta; Hemis
 Proteomonas sulcata, [EBI] Eukaryota; Cryptophyta; Crypt
 Chroomonas sp., [EBI] Eukaryota; Cryptophyta; Crypt
 Komma caudata, [EBI] Eukaryota; Cryptophyta; Crypt
 Chroomonas sp., [EBI] Eukaryota; Cryptophyta; Crypt
 Chroomonas sp., [EBI] Eukaryota; Cryptophyta; Crypt
env.part.RA000412.40
 Teleaulax amphioxeia, [EBI] Eukaryota; Cryptophyta; Telea
env.part.RA000412.158
env.part.RA000412.142
env.part.He000803.94
env.part.RA000412.137
env.part.He0003xx.56
 Geminigera cryophila, [EBI] Eukaryota; Cryptophyta; Crypt
env.part.RA000412.110
 Cryptomonas CCMP325 2, [DEW] Eucarya Protocista Cryptoph
 Cryptomonas phi, Plantae Thallobionta
env.part.He000427.132
 Chroomonas sp. 2, Plantae Thallobionta
 Rhinomonas pauca, [EBI] Eukaryota; Cryptophyta; Crypt
 Storeatula major, [EBI] Eukaryota; Cryptophyta; Crypt
 Rhodomonas mariana, Plantae Thallobionta
 Rhodomonas sp., [EBI] Eukaryota; Cryptophyta; Crypt
 Rhodomonas abbreviata 2, [DEW] Eucarya Protocista Cryptoph
env.part.He000427.53





env.part.RA000412.21

Euglypha rotunda CCAP1520/1, Animalia Protozoa

Paulinella chromatophora, Protista Filosea

env.part.He000427.207

Chlorarachniophyceae (18:0)

Chlorarachnion sp. 242 NU, [DEW] Eucarya Protocista Chlorara

Chlorarachnion sp. 1, Plantae Thallobionta

Chlorarachnion sp. 2, Plantae Thallobionta

Pedinomonas minutissima, [EBI] Eukaryota; Chlorarachniophyce

chlorarachniophyte CCMP1239, [EBI] Eukaryota; Chlorarachniophyce

chlorarachniophyte CCMP1258, [EBI] Eukaryota; Chlorarachniophyce

chlorarachniophyte BC52, [EBI] Eukaryota; Chlorarachniophyce

Chlorarachnion reptans 6, [DEW] Eucarya Protocista Chlorara

Chlorarachnion reptans 238 NU, [DEW] Eucarya Protocista Chlorara

Chlorarachnion reptans Tun. NU, [DEW] Eucarya Protocista Chlorara

Chlorarachnion reptans 10, [DEW] Eucarya Protocista Chlorara

Lotharella sp. Ryukyu, [EBI] Eukaryota; Chlorarachniophyce

Gymnochlora stellata, [EBI] Eukaryota; Chlorarachniophyce

Lotharella sp. #240, [EBI] Eukaryota; Chlorarachniophyce

Lotharella vacuolata, [EBI] Eukaryota; Chlorarachniophyce

Lotharella globosa, [EBI] Eukaryota; Chlorarachniophyce

Chlorarachnion sp. 240 NU, [DEW] Eucarya Protocista Chlorara

env.part.He000803.100

env.OLI019 (7:0)

env.OLI032 (5:0)

Plasmodiophora brassicae, mitochondrial eukaryotes Plasmodio

Plasmodiophora brassicae, [DEW] Eucarya Protocista Plasmodio

Plasmodiophora brassicae, [DEW] Eucarya Protocista Plasmodi

Stramenopiles (356:0)

Diatoms (48:0)

Bolidophyceae (16:0)

Bolidomonas pacifica env.OLI51104, [EBI] Eukaryota; stramenopiles; B

Bolidomonas pacifica env.OLI51103, [EBI] Eukaryota; stramenopiles; B

Bolidomonas pacifica OLI31SE3, [EBI] Eukaryota; stramenopiles; Bol

env.part.He000427.212

env.part.He000427.119

Bolidomonas pacifica OLI41SA, [EBI] Eukaryota; stramenopiles; Bol

Bolidomonas pacifica OLI120SD, [EBI] Eukaryota; stramenopiles; Bol

Bolidomonas pacifica OLI46SE, [EBI] Eukaryota; stramenopiles; Bol

env.part.He000803.41

env.part.He000427.28

env.part.He000803.47

env.part.He000803.53

env.part.He000803.119

env.part.He000427.196

env.part.He000427.149

Bolidomonas mediterranea MINB11E5, [EBI] Eukaryota; stramenopiles;

Pelagophyceae (20:0)

Dictyochophyceae (10:0)

env.OLI11025, [EBI] Stramenopiles; ; ;

Dictyochophyceae (10:0)

- env.OLI11025, [EBI] Stramenopiles; ; ;
 - RCC 304
 - Ciliophrys infusionum, [DEW] Eucarya Protoctista Actinopo
 - Rhizochromulina cf marina, Hyperchondria Eukaryote crown grou
- Apedinella radians, [DEW] Eucarya Protoctista Chrysoph
 - env.part.He000427.20**
- Pteridomonas danica, [DEW] Eucarya Protoctista Chrysoph
- Pseudopedinella elastica, [DEW] Eucarya Protoctista Chrysoph
 - env.part.He000427.5**
- Dictyocha speculum, [DEW] Eucarya Protoctista Chrysoph

Phaeophyceae 1 (37:0)

Phaeophyceae 2 (11:0)

- Coccoid stramenopile CCMP1144, [DEW] Eucarya Protoctista Stram
- Giraudyopsis stellifera, stramenopiles Chrysomerophyceae

Chrysophyceae (74:0)

- Chrysamoeba mikrokonta, stramenopiles Chrysophyceae
- Chromulina nebulosa, stramenopiles Chrysophyceae
- Chrysamoeba pyrenoidifera, stramenopiles Chrysophyceae
- Oikomonas mutabilis, [EBI] Eukaryota; stramenopiles; Oik
- Cyclonexis annularis, stramenopiles Chrysophyceae
- Phaeoplaca thallosa, stramenopiles Chrysophyceae
- Ochromonas tuberculata, stramenopiles Chrysophyceae
- Chrysonephele palustris, [DEW] Eucarya Protoctista Chrysoph
- Epipyxis pulchra, stramenopiles Chrysophyceae
- Epipyxis aurea, stramenopiles Chrysophyceae
- Chrysolepidomonas dendrolepidota, stramenopiles Chrysophyceae
- Ochromonas sphaerocystis, stramenopiles Chrysophyceae
- Ochromonas danica, [DEW] Eucarya Protoctista Chrysoph
- Poterioochromonas malhamensis, stramenopiles Chrysophyceae
- Poterioochromonas stipitata, stramenopiles Chrysophyceae
- Ochromonas CCMP1278, stramenopiles Chrysophyceae
- Dinobryon sertularia, stramenopiles Chrysophyceae
- Dinobryon sociale var. americana, stramenopiles Chrysophyceae
- Uroglena americana, stramenopiles Chrysophyceae
- Ochromonas CCMP584, stramenopiles Chrysophyceae
- env.part.He000427.138**
- Chryso-sphaera parvula, stramenopiles Chrysophyceae
- Lagynion scherffelii, stramenopiles Chrysophyceae
- Chryso-saccus sp. CCMP295, stramenopiles Chrysophyceae
- Chryso-saccus sp. CCMP295, [EBI] Eukaryota; stramenopiles; Chr
- Chromulina chromophila, Plantae Thallobionta
- Hibberdia magna, Plantae Thallobionta
- Chromophyton rosanoffii, stramenopiles Chrysophyceae
- Chrysochaete britannica, stramenopiles Chrysophyceae
- Chryso-capsa vernalis, stramenopiles Chrysophyceae
- Mallomonas striata, stramenopiles Chrysophyceae
- Mallomonas striata, Plantae Thallobionta
- Mallomonas splendens, stramenopiles Chrysophyceae
- Mallomonas adamas, stramenopiles Chrysophyceae
- Mallomonas caudata, stramenopiles Chrysophyceae
- Mallomonas matvienkoae, stramenopiles Chrysophyceae
- Mallomonas rasilis, stramenopiles Chrysophyceae
- Mallomonas papillosa, Plantae Thallobionta
- Tessellaria volvocina, stramenopiles Chrysophyceae
- Mallomonas akrokomos, stramenopiles Chrysophyceae
- Mallomonas annulata, stramenopiles Chrysophyceae

- Tessellaria volvocina, stramenopiles Chrysophyceae
- Mallomonas akrokomos, stramenopiles Chrysophyceae
- Mallomonas annulata, stramenopiles Chrysophyceae
- Synura glabra, [DEW] Eucarya Protoctista Chrysoph
- Synura petersenii, [DEW] Eucarya Protoctista Chrysoph
- Synura uvella, [DEW] Eucarya Protoctista Chrysoph
- Synura spinosa, Plantae Thallobionta
- Synura sphagnicola, [DEW] Eucarya Protoctista Chrysoph
- Synura mammillosa, [DEW] Eucarya Protoctista Chrysoph

Spumella (10:0)

env.part.He000427.18

Spumella elongata, stramenopiles Chrysophyceae

env.part.He000427.193

env.part.He000427.118

env.part.He000803.6

Spumella danica, stramenopiles Chrysophyceae

Spumella sp. 15G, stramenopiles Chrysophyceae

Spumella sp. SpiG, stramenopiles Chrysophyceae

Spumella sp. 37G, stramenopiles Chrysophyceae

Spumella obliqua, stramenopiles Chrysophyceae

Chrysoxys sp. CCMP591, stramenopiles Chrysophyceae

Paraphysomonas butcheri, stramenopiles Chrysophyceae

env.part.He000427.47

Paraphysomonas sp. HD, stramenopiles Chrysophyceae

Paraphysomonas imperforata, stramenopiles Chrysophyceae

Paraphysomonas imperforata, stramenopiles Chrysophyceae

env.part.He0003xx.98

Paraphysomonas foraminifera, stramenopiles Chrysophyceae

Paraphysomonas foraminifera, Plantae Thallobionta

Paraphysomonas bandaiensis, stramenopiles Chrysophyceae

env.part.He000803.44

env.part.He000803.4

env.part.He000803.29

Paraphysomonas foraminifera, stramenopiles Chrysophyceae

Paraphysomonas vestita, Plantae Thallobionta

Paraphysomonas vestita, stramenopiles Chrysophyceae

env.part.He000803.30

env.part.He000427.80

env.part.He0003xx.62

Picophagus flagellatus, [EBI] Eukaryota; stramenopiles.

Raphidophyceae (4:0)

Eustigmatophyceae (34:0)

Oomycetes (19:0)

env.part.He000427.201

env.OLI11008, [EBI] Stramenopiles; ; ;

env.OLI008

env.OLI11026, [EBI] Stramenopiles; ; ;

Developayella elegans, [DEW] Eucarya Protoctista Strameno

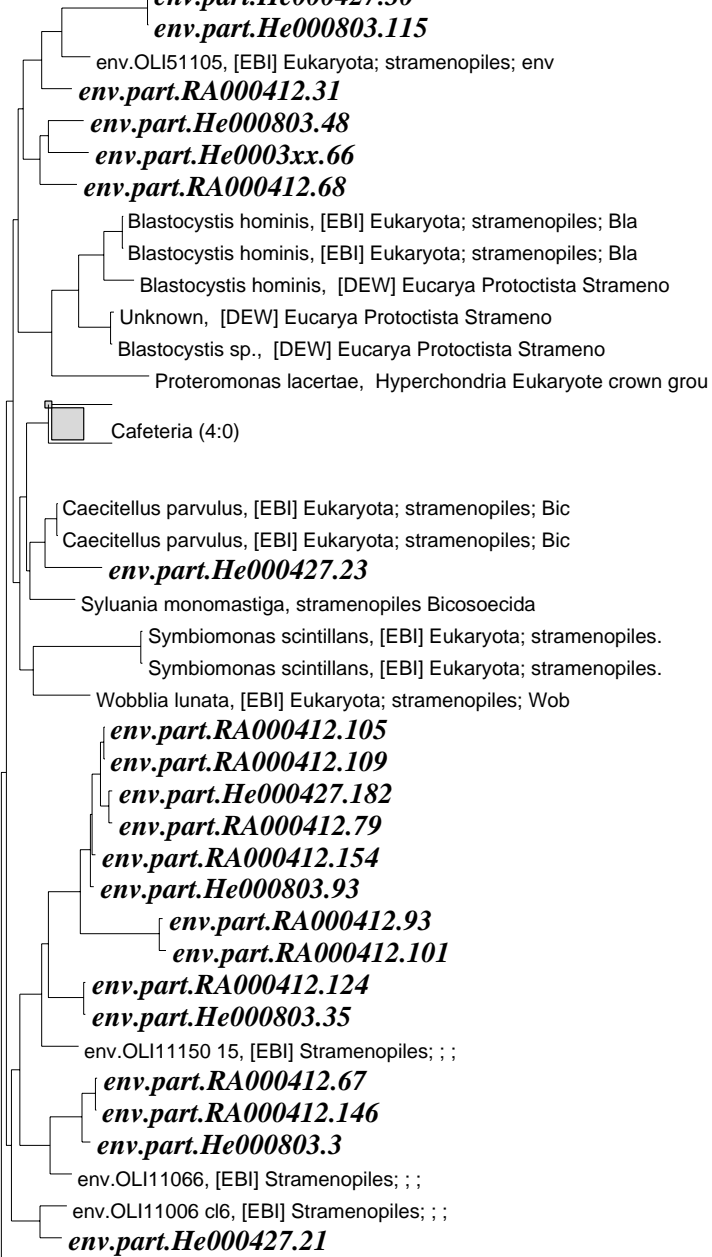
env.part.RA000412.42

Hyphochytriomycetes (3:0)

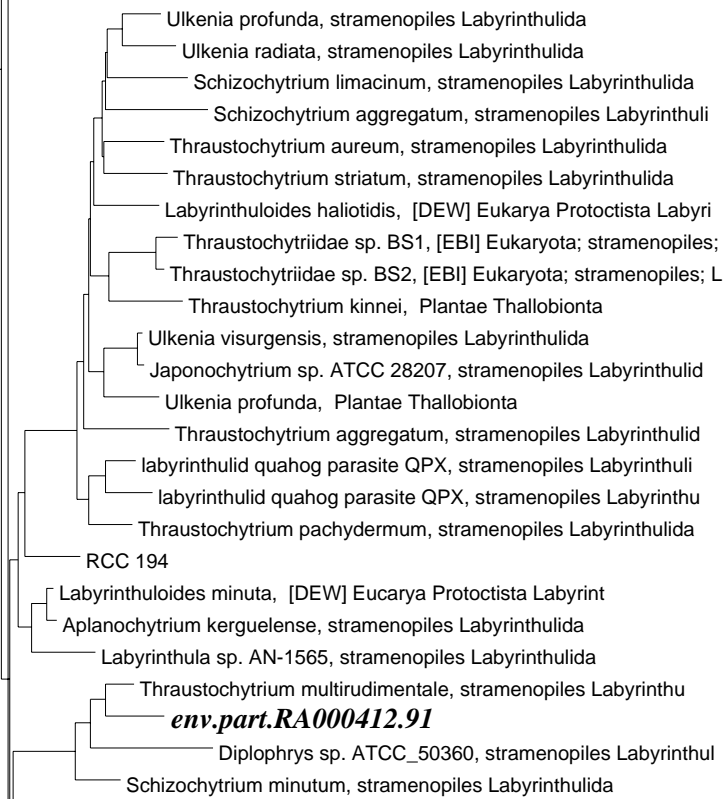
env.part.He000427.30

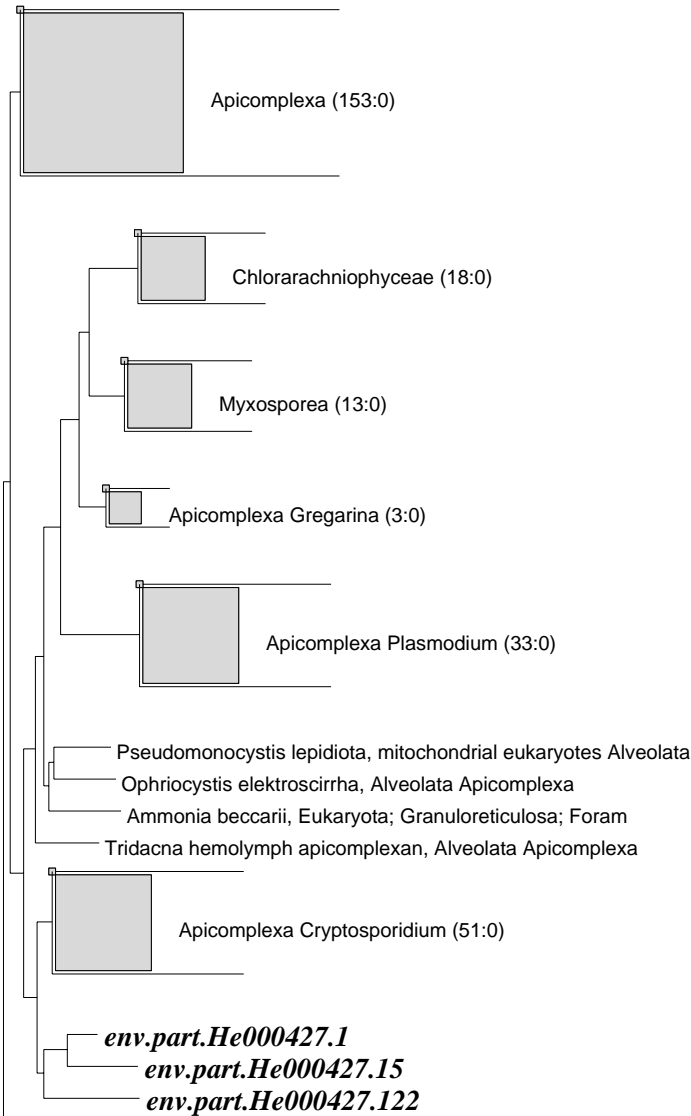
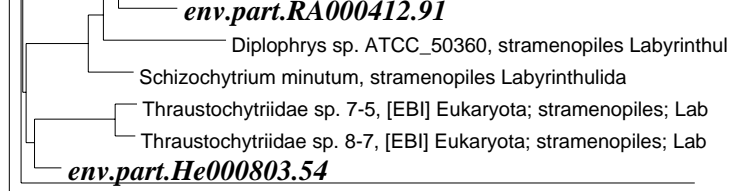
env.part.He000803.115

env.OLI51105, [EBI] Eukaryota; stramenopiles; env



Thraustochytrids (28:0)





Dinophyta (213:0)

Symbiodinium (61:0)

- Symbiodinium sp. Gf46, Alveolata Dinophyceae
- Symbiodinium sp. Gf32, Alveolata Dinophyceae
- Symbiodinium sp. Gf6, Alveolata Dinophyceae
- Symbiodinium sp., Alveolata Dinophyceae
- Symbiodinium sp. Gf14, Alveolata Dinophyceae
- Symbiodinium sp., Alveolata Dinophyceae
- Symbiodinium sp., Alveolata Dinophyceae
- Symbiodinium sp., Alveolata Dinophyceae
- Symbiodinium sp., Alveolata Dinophyceae
- Symbiodinium sp., Alveolata Dinophyceae
- Symbiodinium sp., Alveolata Dinophyceae
- Symbiodinium sp., Alveolata Dinophyceae
- Symbiodinium sp., Alveolata Dinophyceae
- Symbiodinium sp., Alveolata Dinophyceae
- Symbiodinium sp. Af5, Alveolata Dinophyceae
- Symbiodinium sp. Gf4, Alveolata Dinophyceae
- Symbiodinium sp. Af6, Alveolata Dinophyceae
- Symbiodinium sp. Fs8, Alveolata Dinophyceae

env.part.He000427.104

env.OLI002(5)

env.part.He000803.64

env.part.He000803.31

env.OLI002(5)

env.part.He000803.64

env.part.He000803.31

Unidentified symbiotic dinoflagellate BBSR 15, [EBI] Eukaryota; Alv

Symbiodinium sp., Alveolata Dinophyceae

Symbiodinium sp., Alveolata Dinophyceae

Symbiodinium sp., Alveolata Dinophyceae

Symbiodinium pilosum, [DEW] Eucarya Protocista Dinoflage

Symbiodinium pilosum, Plantae Thallobionta

Symbiodinium pilosum, Plantae Thallobionta

Symbiodinium corcolorum, Plantae Thallobionta

Symbiodinium meandrinae, Plantae Thallobionta

Symbiodinium sp., Alveolata Dinophyceae

Symbiodinium sp., Alveolata Dinophyceae

Symbiodinium microadriaticum, Plantae Thallobionta

Symbiodinium sp. 2, Plantae Thallobionta

Symbiodinium californium, Alveolata Dinophyceae

Symbiodinium sp., Alveolata Dinophyceae

Symbiodinium sp. Fp8, Alveolata Dinophyceae

Symbiodinium sp. Fp3, Alveolata Dinophyceae

Symbiodinium sp. Pc3, Alveolata Dinophyceae

Symbiodinium sp. Pc9, Alveolata Dinophyceae

Symbiodinium sp. Lt2, Alveolata Dinophyceae

Symbiodinium sp., Alveolata Dinophyceae

Symbiodinium sp. Fs1, Alveolata Dinophyceae

Symbiodinium sp. Pc5, Alveolata Dinophyceae

Symbiodinium sp. Pv9, Alveolata Dinophyceae

Symbiodinium sp. Pv2, Alveolata Dinophyceae

Symbiodinium sp. Fs2, Alveolata Dinophyceae

Symbiodinium sp. Fp7, Alveolata Dinophyceae

Symbiodinium sp. Fp2, Alveolata Dinophyceae

Symbiodinium sp., Alveolata Dinophyceae

Symbiodinium sp. Lt3, Alveolata Dinophyceae

Symbiodinium sp. 3, Plantae Thallobionta

Symbiodinium sp., Plantae Thallobionta

Symbiodinium sp., Alveolata Dinophyceae

Symbiodinium sp., Alveolata Dinophyceae

Symbiodinium sp. Lt4, Alveolata Dinophyceae

Symbiodinium sp., Alveolata Dinophyceae

Symbiodinium sp., Alveolata Dinophyceae

Symbiodinium sp. Mc6, Alveolata Dinophyceae

Symbiodinium sp. Mc1, Alveolata Dinophyceae

Symbiodinium sp. Mc2, Alveolata Dinophyceae

Gymnodinium beei (5:0)

Gymnodinium beei, Alveolata Dinophyceae

Gymnodinium beei, Alveolata Dinophyceae

Gymnodinium beei, Alveolata Dinophyceae

Gymnodinium beei, Alveolata Dinophyceae

env.part.He000427.64

Polarella glacialis, Alveolata Dinophyceae

Gymnodinium beei, Alveolata Dinophyceae

Gymnodinium simplex, Alveolata Dinophyceae

Amphidinium (2:0)

env.part.He0003xx.104

Gonyaulax (2:0)

Ceratium (3:0)

Halostylodinium arenarium, Alveolata Dinophyceae

Ceratocorys horrida, Alveolata Dinophyceae

Halostylodinium arenarium, Alveolata Dinophyceae
Ceratacorys horrida, Alveolata Dinophyceae
Alexandrium (7:0)
Pyrocystis noctiluca, Alveolata Dinophyceae
Fragilidium subglobosum, Alveolata Dinophyceae

env.part.OLI006

Gymnodinium catenatum, Alveolata Dinophyceae
env.part.OLI048
Gymnodinium sp. MUCC284, Alveolata Dinophyceae
Lepidodinium viride, Alveolata Dinophyceae
Gyrodinium impudicum, Alveolata Dinophyceae
Gymnodinium fuscum, Alveolata Dinophyceae

Crypthecodinium cohnii, Plantae Thallobionta
env.part.He000803.112
env.OLI11027 27(5), [EBI] Alveolata; Dinophyceae; ;
Peridinium sp., Alveolata Dinophyceae
Peridinium bipes, Alveolata Dinophyceae
Gloeodinium viscum, Plantae Thallobionta
env.OLI11255 25(5), [EBI] Alveolata; Dinophyceae; ;
env.part.OLI084
env.OLI11005 C(5), [EBI] Alveolata; Dinophyceae; ;
Peridinium balticum, Alveolata Dinophyceae
Pentapharsodinium tyrrhenicum, Alveolata Dinophyceae

Prorocentrum (9:0)

Prorocentrum lima, Alveolata Dinophyceae
Prorocentrum arenarium, Alveolata Dinophyceae
Prorocentrum maculosum, Alveolata Dinophyceae
Prorocentrum emarginatum, Alveolata Dinophyceae
Prorocentrum panamensis, Alveolata Dinophyceae
env.part.He0003xx.74
Prorocentrum mexicanum, Alveolata Dinophyceae
env.part.RA000412.25
Hematodinium sp. MF-2000, Alveolata Dinophyceae

Prorocentrum micans, Plantae Thallobionta
Unidentified symbiotic dinoflagellate from Co, [EBI] Eukaryota; Alveolata;
Unidentified symbiotic dinoflagellate BBSR 32, [EBI] Eukaryota; Alveolata;
Unidentified symbiotic dinoflagellate BBSR 15, [EBI] Eukaryota; Alveolata;
Unidentified symbiotic dinoflagellate from Sp, [EBI] Eukaryota; Alveolata;
Unidentified symbiotic dinoflagellate BBSR 33, [EBI] Eukaryota; Alveolata;
Scrippsiella nutricula, [EBI] Eukaryota; Alveolata; Dinophy
Gymnodinium sanguineum, Alveolata Dinophyceae
Gymnodinium sanguineum, Alveolata Dinophyceae
Heterocapsa triquetra, Alveolata Dinophyceae
Cachonina hallii, Alveolata Dinophyceae

Gymnodinium mikimotoi (5:0)

Gyrodinium sp., Alveolata Dinophyceae
Gymnodinium galatheanum, Alveolata Dinophyceae
env.part.RA000412.39
Prorocentrum concavum, Alveolata Dinophyceae
Prorocentrum minimum, Alveolata Dinophyceae

env.part.He000803.9
Amyloodinium ocellatum, Alveolata Dinophyceae
Cryptoperidiniopsis brodyi, [EBI] Eukaryota; Alveolata; Dinophy
Pfiesteria-like dinoflagellate, [EBI] Eukaryota; Alveolata; Dinophy
Pfiesteria sp. B112456, [EBI] Eukaryota; Alveolata; Dinophy
Pfiesteria piscicida, [EBI] Eukaryota; Alveolata; Dinophy
Pfiesteria piscicida, [EBI] Eukaryota; Alveolata; Dinophy

env.part.He000427.37

Peridinium foliaceum, Alveolata Dinophyceae

Phlebotoma pusillula, [EBI] Eukaryota, Alveolata, Dinophy

env.part.He000427.37

Peridinium foliaceum, Alveolata Dinophyceae

Noctiluca scintillans, Alveolata Dinophyceae

env.part.OLI014(5)

env.part.OLI016

env.part.OLI073

Amoebophyra (64:0)

env.part.OLI006-1

env.part.OLI001

env.OLI11010, [EBI] Alveolata; Dinophyceae; ;

env.part.OLI061

env.part.OLI054

env.part.OLI057

env.part.OLI070

env.part.OLI029(5)

env.part.He000803.108

env.part.He000803.12

env.part.OLI00B

env.part.OLI024

env.OLI11023 23(5), [EBI] Alveolata; Dinophyceae; ;

env.part.OLI031(5)

env.part.OLI064

env.part.OLI017(5)

env.OLI081

env.part.He000427.44

env.part.He000803.96

env.part.He0003xx.86

env.part.He000803.8

env.part.RA000412.134

env.part.He000803.80

env.part.He000803.106

env.part.He000803.51

env.part.He0003xx.39

env.part.He000803.37

env.part.He000803.114

env.OLI11055, [EBI] Alveolata; Dinophyceae; ;

env.part.RA000412.20

env.part.RA000412.80

env.part.He000803.78

env.part.He0003xx.112

env.OLI11115 1-1(5), [EBI] Alveolata; Dinophyceae; ;

env.part.OLI043

env.part.RA000412.113

env.part.He000803.60

env.part.He000803.117

env.part.He000803.25

env.part.He000803.90

Amoebophrya sp., Alveolata Dinophyceae

env.part.He000803.87

env.part.He000803.91

env.part.He000803.79

env.part.He000803.59

env.part.He000803.118

env.OLI11261 26(1), [EBI] Alveolata; Dinophyceae; ;

env.part.OLI031

env.part.RA000412.19

env.part.He000803.2

env.part.He000427.101

env.part.He000803.36

env.part.He000803.102

env.part.RA000412.90

env.part.RA000412.123

env.part.RA000412.159

env.OLI11009, [EBI] Alveolata; Dinophyceae; ;

env.part.OLI060

env.part.RA000412.159

env.OLI11009, [EBI] Alveolata; Dinophyceae; ;

env.part.OLI060

env.part.RA000412.149

env.part.OLI056

env.OLI11012, [EBI] Alveolata; Dinophyceae; ;

env.part.OLI021(5)

env.part.He000427.90

env.part.He000803.73

env.part.He0003xx.29

env.part.He0003xx.72

env.OLI11001 (15:0)

env.OLI11511 (14:0)

env.part.OLI017-1

env.part.OLI046

env.part.OLI018(5)

env.part.OLI018

env.part.OLI035

env.part.OLI022(5)

env.part.OLI038(5)

env.part.OLI045

env.part.He0003xx.27_1

env.part.He0003xx.108

env.part.He0003xx.50

env.part.He0003xx.101

env.OLI11511 11(5), [EBI] Alveolata; ; ;

env.OLI02001, [EBI] Eukaryota; Alveolata.

Parvilucifera infectans, Alveolata Perkinsea

Oxyrrhis marina, Alveolata Dinophyceae

Perkinsus (5:0)

Ciliophora (200:0)

Strombidium (39:0)

env.part.RA000412.78

env.part.RA000412.128

env.part.RA000412.86

env.part.RA000412.22

Strombidium purpureum, Alveolata Ciliophora

env.part.OLI035(5)

env.part.He0003xx.55

env.part.He0003xx.67

env.part.He0003xx.91

env.part.He0003xx.49

env.part.He0003xx.40

env.part.He0003xx.45

env.part.RA000412.92

env.part.He000803.45

env.part.He000803.28

env.part.He0003xx.65

env.part.RA000412.156

env.part.RA000412.95

env.part.He000427.7

env.part.He000803.10

env.part.He000803.26

env.part.He000803.81

env.part.He0003xx.25

env.part.RA000412.71

env.part.He000803.66

env.part.He0003xx.23
env.part.RA000412.71
env.part.He000803.66
env.part.He000803.16
env.part.RA000412.63
env.part.RA000412.46
env.part.RA000412.32
env.part.He0003xx.92
env.part.He0003xx.69
env.part.He000427.87
env.part.He000427.43
env.part.He000803.52
env.part.RA000412.135
env.part.He000427.215
env.part.He000427.49
env.part.He0003xx.63
env.part.He0003xx.33

Stylonychia pustulata, [DEW] Eucarya Protoctista Ciliopho
Stylonychia pustulata, mitochondrial eukaryotes Alveolata
Oxytricha nova, mitochondrial eukaryotes Alveolata
Oxytricha nova, [DEW] Eucarya Protoctista Ciliopho
Onychodromus quadricornutus, [DEW] Eucarya Protoctista Ciliopho
Oxytricha sp., Alveolata Ciliophora
Pleurotricha lanceolata, Alveolata Ciliophora
Gastrostyla steinei, Alveolata Ciliophora
Oxytricha trifallax, Alveolata Ciliophora
Oxytricha sp. Aspen, Alveolata Ciliophora
Stylonychia mytilus, Alveolata Ciliophora
Halteria grandinella, Alveolata Ciliophora
Halteria grandinella, Alveolata Ciliophora
Oxytricha granulifera, mitochondrial eukaryotes Alveolata
Oxytricha granulifera, Alveolata Ciliophora
Engelmanniella mobilis, Alveolata Ciliophora
Uroleptus pisces, Alveolata Ciliophora
Paruroleptus lepisma, Alveolata Ciliophora
Uroleptus gallina, Alveolata Ciliophora
Cyrtohymena citrina, Alveolata Ciliophora
Paraurostyla weissei, Alveolata Ciliophora
Oxytricha sp., Alveolata Ciliophora
Stylonychia lemnae, Alveolata Ciliophora
Oxytricha longa, Alveolata Ciliophora
Urostyla grandis, Alveolata Ciliophora
Uronychia transfuga, Alveolata Ciliophora
Diophrys appendiculata, Alveolata Ciliophora
Phacodinium metchnikoffi, Alveolata Ciliophora
Euplotes (5:0)
Aspidisca steini, Alveolata Ciliophora
Protocruzia sp., mitochondrial eukaryotes Alveolata
Protocruzia sp. 106177, [EBI] Eukaryota; Alveolata; Cilioph
Nyctotheroides deslierresae, Alveolata Ciliophora
Nyctotheroides parvus, Alveolata Ciliophora
Metopus palaeformis, mitochondrial eukaryotes Alveolata
Nyctotherus ovalis, Alveolata Ciliophora
Metopus contortus, mitochondrial eukaryotes Alveolata
Caenomorpha uniserialis, Alveolata Ciliophora
Ophryoscolex purkynjei, Alveolata Ciliophora
Epidinium caudatum, Alveolata Ciliophora
Diplodinium dentatum, Alveolata Ciliophora
Entodinium simplex, mitochondrial eukaryotes Alveolata
Polyplastron multivesiculatum, Alveolata Ciliophora
Eudiplodinium maggii, Alveolata Ciliophora
Entodinium caudatum, Alveolata Ciliophora
Dasytricha ruminantium, Alveolata Ciliophora
Dasytricha ruminantium, mitochondrial eukaryotes Alveolata

