

Diatom plastid (36:0)

- uncultured bacillariophyte clone AWS98-11b, 726 , [EBI] Eukary
- uncultured bacillariophyte clone AWS98-19b, 1437 , [EBI] Euk
- env.plast.OCS54, 1478 , [EBI] Eukaryota; environmental samp
- env.plast.OCS54, 1478 , [EBI] Eukaryota; environmental samp
- env.plast. diatom sp. SIC.103602, 468 , [EBI] Eukaryota; strameno
- env.plast. diatom sp. ARCTIC.149, 988 , [EBI] Eukaryota; stramen
- env.plast.P5.2 diatom, 343 , [EBI] Eukaryota; stramenopiles; Bac
- env.plast.P6.1 diatom, 380 , [EBI] Eukaryota; stramenopiles; Bac
- env.plast.P4.3 diatom, 271 , [EBI] Eukaryota; stramenopiles; Bac
- env.plast.OM22, 700 , [EBI] Eukaryota.
- unidentified marine eubacterium, 971 , [EBI] Eubacteria; environ
- env.plast. diatom sp. SIC.928, 988 , [EBI] Eukaryota; stramenop
- env.plast. diatom sp. SIC.8113, 488 , [EBI] Eukaryota; strameno
- env.plast. diatom sp. SIC.42333, 987 , [EBI] Eukaryota; strameno
- str PAD32, 269 , [EBI] Unclassified.
- str PAD22, 268 , [EBI] Unclassified.
- env.agg46, 1252 , [DEW] Bacteria Cyanobacteria [DEW]
- Skeletonema pseudocostatum, 1485 , Plantae Thallobionta
- Skeletonema costatum, 1484 , Plantae Thallobionta
- env.agg56, 1333 , [DEW] Bacteria Cyanobacteria [DEW]
- env.plast.OM19, 699 , [EBI] Eukaryota.
- env.plast.P4.6 benthic diatom, 378 , [EBI] Eukaryota; stramenopiles
- env.plast.P6.2 benthic diatom, 379 , [EBI] Eukaryota; stramenopiles
- env.plast.P2.4 benthic diatom, 323 , [EBI] Eukaryota; stramenopile
- env.plast. diatom sp. SIC.813, 586 , [EBI] Eukaryota; stramenopile
- env.plast.P2.2 benthic diatom, 324 , [EBI] Eukaryota; stramenopile
- env.plast.P4.4 benthic diatom, 300 , [EBI] Eukaryota; stramenopi
- Odontella sinensis Pla., 1485 , [DEW] Plastids Protoctista Bacilla
- env.plast.OM13, 697 , [EBI] Eukaryota.
- env.Dyf991001_16S.38, 1423**
- env.part.Dyf991001_16S.38, 544
- env.plast.OCS56, 554 , [EBI] Eukaryota; environmental samp
- uncultured bacillariophyte clone AWS98-2c, 696 , [EBI] Eukaryota;
- uncultured bacillariophyte clone AWS98-11c, 480 , [EBI] Eukaryot
- unidentified marine eubacterium, 973 , [EBI] Eubacteria; environ
- env.plast.OM20, 1474 , [DEW] Plastids Protoctista Uncerta

- env.plast. diatom sp. McMurdo.54, 985 , [EBI] Eukaryota; stra
- env.plast.DGGE.ESR 3, 567 , [EBI] Eukaryota; environmental sam
- env.plast.ATT4, 167 , [EBI] Eukaryota; environmental samp
- Pylaiella littoralis, 1505 , [DEW] Plastids Protoctista Phaeoph
- Olisthodiscus luteus Pla., 1520 , [DEW] Plastids Protoctista C
- Olisthodiscus luteus -- chloroplast, 1520
- env.plast.Antarctic 5X17 Wilmotte
- env.plast.Antarctic 5X18 Wilmotte
- env.plast.OM164, 1477 , [EBI] Eukaryota; environmental samp

Prasino plastid (10:0)

Euglena palstid (7:0)

Astasia longa -- chloroplast, 1520 , Plantae Thallob

Dino with 19HF plastid (4:0)

Pavlova gyrans, 1443 , [EBI] Eukaryota; Haptophyceae; Pav

- Plasmodium falciparum plastid-lik
- Plasmodium falciparum, 1497 , Ani
- Plasmodium falciparum Mit. 3, 142

Babesia bovis 4, 1408 , An

Corynaea crassa, 1365 , Viridipl

kinetopla

env.plast. diatom sp. SIC.42

Prototheca zopfii Pla., 1511 , Plantae Tha

Toxoplasma gondii, 1017 , mitochondrial eu

Chlorarachnion reptans, 1434 , [DEW] Plastids Protect

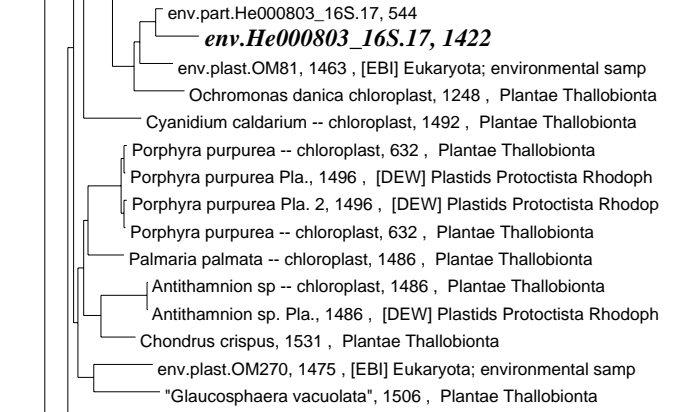
Chlorarachnion CCMP 242 plastid , 1434 , Plantae T

Chlorarachnion CCMP 240 plastid, 1439 , Plantae Th

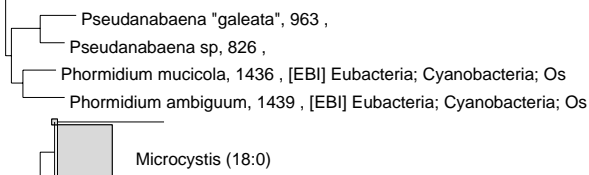
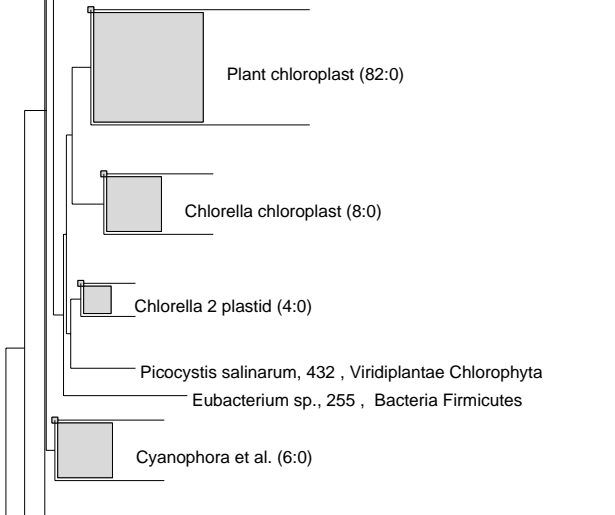
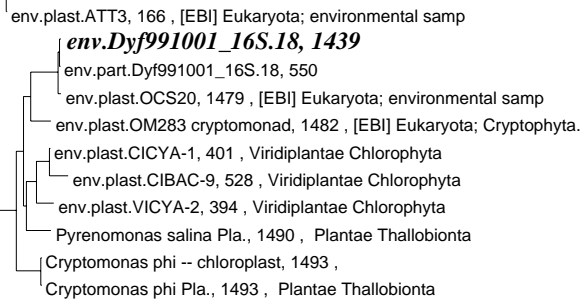
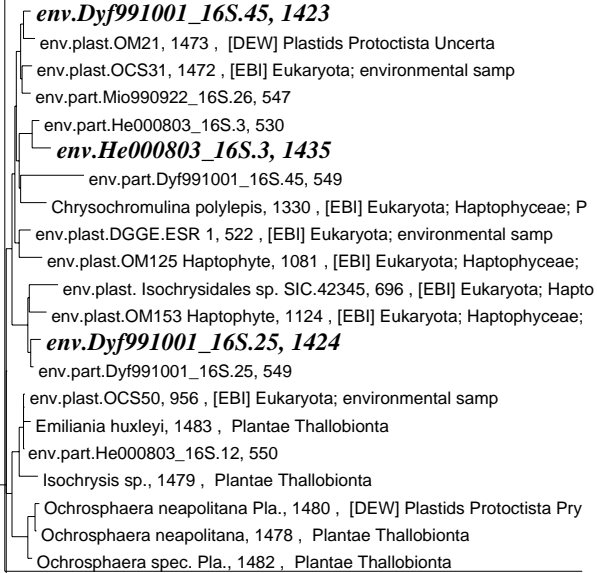
env.part.He000803_16S.17, 544

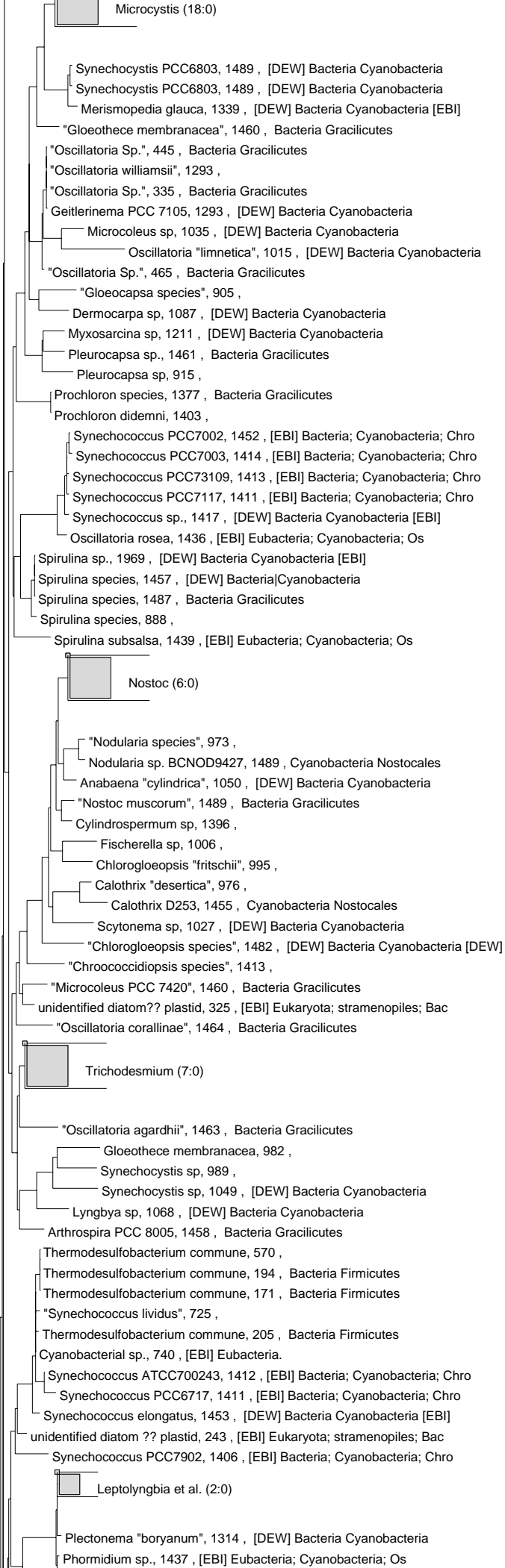
env.He000803_16S.17, 1422

env.plast.OM81, 1463 , [EBI] Eukaryota; environmental samp



Prymnesio 1 plastid (21:0)





Plectonema "boryanum", 1314 , [DEW] Bacteria Cyanobacteria
 Phormidium sp., 1437 , [EBI] Eubacteria; Cyanobacteria; Os
 Oscillatoria sp., 1437 , [EBI] Eubacteria; Cyanobacteria; Os
 Oscillatoria "amphigranulata", 864 ,
 "Chamaesiphon PCC 7430", 1407 , [DEW] Bacteria Cyanobacteria [DEW]
 "Cyanobacterium sp. OS-VI-L16", 1299 , [DEW] Bacteria Cyanobacteria [D
 str isolate OPI-8, 1166 , Bacteria Firmicutes
 Leptolyngbya sp., 1466 , Bacteria Gracilicutes
 env.cyano.MBE9, 171 , [EBI] Bacteria; Cyanobacteria; envi

Prochlorococcus (59:0)

clone NH16-15, 294 , Bacteria Gracilicutes
 Clone NH16-17, 184 , Bacteria Gracilicutes
 clone 16-5, 153 , Bacteria Gracilicutes
 str clone NH25-8, 314 , Bacteria Gracilicutes
 str clone SAR6, 1470 , [DEW] Bacteria Cyanobacteria [DEW]
 Prochlorococcus sp. CCMP1378, 1147 , Cyanobacteria Prochlorop
 Prochlorococcus sp. CCMP1426, 1147 , Cyanobacteria Prochlorop
 Prochlorococcus PCC9511, 1465 , Cyanobacteria Prochlorophytes
 Prochlorococcus sp. NATL2, 1147 , Cyanobacteria Prochlorophytes
 Prochlorococcus sp. TATL1A, 1147 , Cyanobacteria Prochlorophyte
 Prochlorococcus sp. NATL1, 1147 , Cyanobacteria Prochlorophytes
 Prochlorococcus env.ENATL6, 1147 , Cyanobacteria Prochloroph
 Prochlorococcus env.ENATL5, 1147 , Cyanobacteria Prochloroph
 Prochlorococcus env.ENATL2, 1147 , Cyanobacteria Prochloroph
env.part.BL000921_16S.3, 752
env.part.BL000921_16S.7, 752
 Prochlorococcus env.ENATL1, 1147 , Cyanobacteria Prochloroph
 Prochlorococcus env.ENATL3, 1147 , Cyanobacteria Prochloroph
 Prochlorococcus sp. TATL1B, 1147 , Cyanobacteria Prochlorophytes
 Prochlorococcus sp. MIT9107, 1146 , Cyanobacteria Prochlorophyte
 Prochlorococcus env.NH25-33, 285 , Bacteria Gracilicutes
 Prochlorococcus env.BDA1-12, 267 , Bacteria Gracilicutes
 Prochlorococcus env.NH29-18, 293 , Bacteria Gracilicutes
 Prochlorococcus sp. MIT9302, 1401 , Cyanobacteria Prochlorophyte
 Prochlorococcus sp. MIT9201, 1400 , Cyanobacteria Prochlorophyte
 Prochlorococcus sp. MIT9312, 1400 , Cyanobacteria Prochlorophyte
 Prochlorococcus sp. TATL2, 1147 , Cyanobacteria Prochlorophytes
 Prochlorococcus sp. GP2, 1147 , Cyanobacteria Prochlorophytes
 Prochlorococcus sp. SB, 1147 , Cyanobacteria Prochlorophytes
 Prochlorococcus sp. MIT9215, 1382 , Cyanobacteria Prochlorophyt
 Prochlorococcus sp. MIT9202, 1400 , Cyanobacteria Prochlorophyte
 str clone NH29-14, 244 , Bacteria Gracilicutes
 str clone NH29-1, 239 , Bacteria Gracilicutes
 str clone NH25-20, 232 , Bacteria Gracilicutes
 str clone NH25-6, 224 , Bacteria Gracilicutes
 clone 168bp, 168 , [EBI] Prokaryota; Bacteria; Gracil
 clone 168bp, 168 , [EBI] Prokaryota; Bacteria; Gracil
 clone 159bp, 159 , [EBI] Prokaryota; Bacteria; Gracil
env.Mio990922_16S.31, 1422
env.Dyf991001_16S.33, 1433
env.Mio990922_16S.43, 1395
 Prochlorococcus sp. PAC1, 1147 , Cyanobacteria Prochlorophytes
 Prochlorococcus sp. NATL2A, 1146 , Cyanobacteria Prochlorophytes
 Prochlorococcus env.ENATL7, 1147 , Cyanobacteria Prochlorophyt
 Prochlorococcus env.ENATL4, 1147 , Cyanobacteria Prochlorophyt
 env.part.Dyf991001_16S.33, 550
 env.part.Mio990922_16S.31, 547
 env.part.Mio990922_16S.43, 550
 env.part.Dyf991001_16S.13, 550
 "Prochlorococcus marinus" SSW5, 1147 , [DEW] Bacteria Cyanobacte
 env.SAR12, 275 , [EBI] Prokaryota; Bacteria.
 env.part.Mio990922_16S.12, 541
 Prochlorococcus sp. MIT9211, 1401 , Cyanobacteria Prochlorophyte
env.Dyf991001_16S.13, 1439
env.Mio990922_16S.60, 1422
 env.part.Mio990922_16S.60, 538
 Prochlorococcus sp. MIT9313, 1400 , Cyanobacteria Prochlorophytes
 Prochlorococcus sp. MIT9303, 1400 , Cyanobacteria Prochlorophytes
 Prochlorococcus sp. MIT9303, 1126 , Cyanobacteria Prochlorophytes

SynMinos11, 1439
SynMinos1, 1439
env.part.BL000921_16S.5, 752
env.part.BL000921_16S.2, 735
env.part.He000803_16S.24, 817
SynAlmo3, 1439

env.part.BL000921_16S.2, 735
env.part.He000803_16S.24, 817
SynAlmo3, 1439
SynCC9311, 1439
SynRS9911, 1440
SynRS9908, 1440
SynRS9904, 1440
SynRS9902, 1440
SynRS9910, 1440
SynRS9919, 1440
SynRS9903, 1440
SynRS9907, 1440
SynRS9912, 1412
env.part.He000803_16S.24, 550
env.SAR7, 1473, [DEW] Bacteria Cyanobacteria [DEW]
Synechococcus env.kpj163f, 649, Cyanobacteria Chroococcal
Synechococcus env.NAC1-5, 1446, Cyanobacteria Chroococcales
cyanobacterium 5X15, 1479, Cyanobacteria Chroococcales
env.part.BL000921_16S.1, 624
env.part.BL000921_16S.6, 753
Synechococcus env.SAR139, 1295, [DEW] Bacteria Cyanobacteria [DEW]
Synechococcus WH8103, 1261, [EBI] Eubacteria; Cyanobacteria; Ch
Synechococcus env., 167, [EBI] Prokaryota; Bacteria; Gracil
SynMinos2, 1438
SynMax42, 1438
SynMinos12, 1438
SynWH8103, 1438
SynRS9905, 1438
SynRS9915, 1419
SynC129, 1180
Synechococcus env.SAR100, 1291, [DEW] Bacteria Cyanobacteria [DEW]
Synechococcus GL150636, 1439, [EBI] Bacteria; Cyanobacteria; Chr
Synechococcus PCC7920, 1407, [EBI] Bacteria; Cyanobacteria; Chro
Synechococcus PCC7009, 1407, [EBI] Bacteria; Cyanobacteria; Chro
Synechococcus sp. PS715, 1406, [EBI] Bacteria; Cyanobacteria; Chro
Synechococcus str. P212, 1446, [EBI] Bacteria; Cyanobacteria.
Synechococcus PCC7918, 1407, [EBI] Bacteria; Cyanobacteria; Chro
Synechococcus PCC6904, 1407, [EBI] Bacteria; Cyanobacteria; Chro
Microcystis elabens 2, 1449, [DEW] Bacteria Cyanobacteria
"Microcystis holsatica", 1444, [DEW] Bacteria Cyanobacteria [EBI]
Synechococcus PCC6307, 1438, [EBI] Eubacteria; Cyanobacteria; Ch
Synechococcus env.PENDANT-4, 997, Cyanobacteria Prochlo
Synechococcus env.PENDANT-2, 997, Cyanobacteria Prochloro
Synechococcus-like str. PENDANT, 1444, [EBI] Bacteria; Cyanob
Synechococcus-like str. ABRAXAS, 1444, [EBI] Bacteria; Cyanob
Synechococcus-like str. ACE, 1444, [EBI] Bacteria; Cyanobacteri
Synechococcus-like str. P211, 1446, [EBI] Bacteria; Cyanobacteria.
Synechococcus PS680, 1408, [EBI] Bacteria; Cyanobacteria; Chro
SynBright, 1440
Synechococcus PCC7001, 1411, [EBI] Bacteria; Cyanobacteria; Chro
Synechococcus sp. PS723, 1407, [EBI] Bacteria; Cyanobacteria; Chro
Synechococcus sp. PS721, 1407, [EBI] Bacteria; Cyanobacteria; Chro
Synechococcus sp. PS717, 1407, [EBI] Bacteria; Cyanobacteria; Chro
Synechococcus sp. Biwa-G0, 1001, [EBI] Eubacteria; Cyanobacteria;
Synechococcus sp. BiwaB-B0, 1001, [EBI] Eubacteria; Cyanobacteria;
Synechococcus sp. Biwa-P0, 1001, [EBI] Eubacteria; Cyanobacteria;
Synechococcus PCC9005, 1407, [EBI] Bacteria; Cyanobacteria; Chro
Synechococcus env.kpj425f, 509, Cyanobacteria Chroococcales
SynRS9914, 1439
SynRS9909, 1420
SynRS9906, 1381
SynRS9913, 1371
SynRS9918, 1355
SynRS9917, 869
Synechococcus WH8101, 1437, [EBI] Eubacteria; Cyanobacteria; Ch
uncultured Synechococcus kpa27rc, 745, Cyanobacteria Chroococcales
Synechococcus WH7803, 1294, [EBI] Bacteria; Cyanobacteria; Chro
SynWH7803, 1438
SynDim, 1438
SynWH8018, 1439
Synechococcus WH7805, 1223, [EBI] Eubacteria; Cyanobacteria; Ch
SynOli31, 1439
SynEum14, 1439
SynRS9920, 1439
env.part.BL000921_16S.8, 741
SynRS9901, 1439
SynRS9916, 1439

SynRS9920, 1439
env.part.BL000921_16S.8, 741
SynRS9901, 1439
SynRS9916, 1439

Synechococcus et al. (8:0)

Prochlorothrix hollandica, 1202 ,

Phormidium (14:0)

Synechococcus PCC7335, 1410 , [EBI] Bacteria; Cyanobacteria; Chro

Oscillatoria neglecta, 1438 , [EBI] Eubacteria; Cyanobacteria; Os

Synechococcus ATCC700246, 1395 , [EBI] Bacteria; Cyanobacteria; Chro

Synechococcus ATCC700245, 1395 , [EBI] Bacteria; Cyanobacteria; Chro

Octopus Spring microbial mat DNA Type B, 1309 , [DEW] Bacteria Cyanobacteri

Octopus Spring microbial mat DNA Type A, 423 , [EBI] Prokaryota; Bacteria.

Cyanobacterial sp., 536 , [EBI] Eubacteria.

Cyanobacterial sp., 630 , [EBI] Eubacteria.

Synechococcus ATCC700244, 1409 , [EBI] Bacteria; Cyanobacteria; Chro

"Cyanobacterium sp. OS-VI-L13 (P.)", 1081 , [DEW] Bacteria Cyanobacteria [DE

"Gloeobacter violaceus", 1405 , [DEW] Bacteria Cyanobacteria

env.part.Dyf991001_16S.12, 974

env.part.BL000921_16S.9, 749

Roseobacter algalicola, 1361 , [DEW] Bacteria Proteobacteria Alph