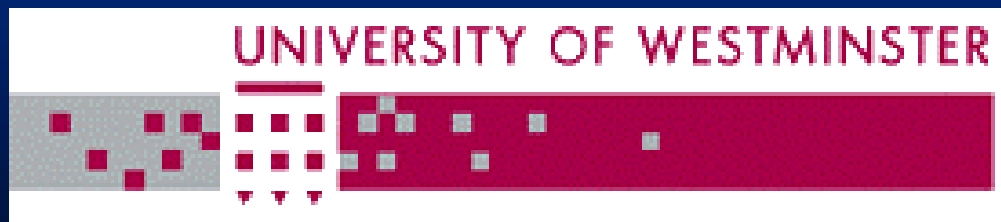
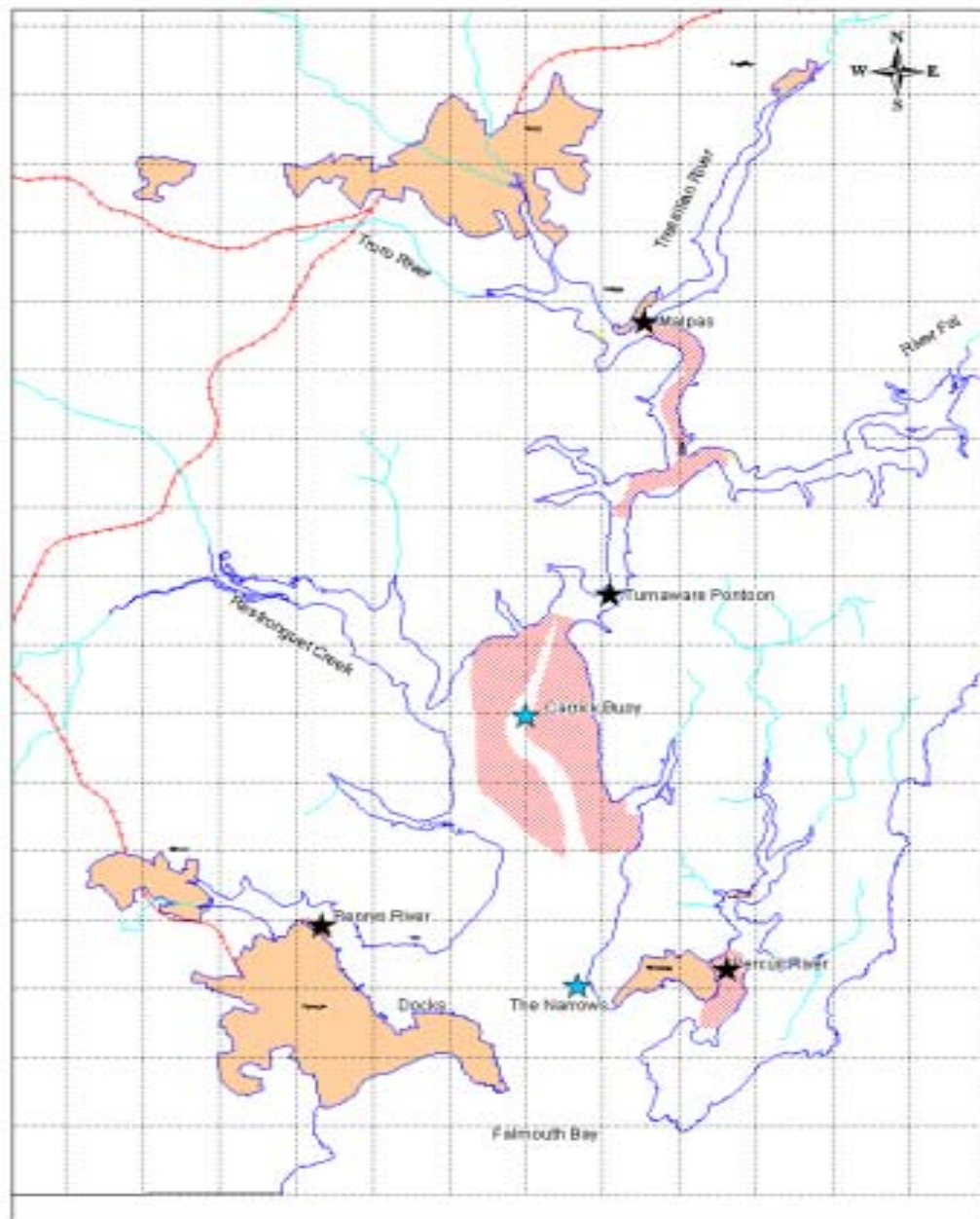


Phytoplankton of the Fal Estuary and the relationship between algal presence and algal biotoxins in shellfish

Linda Percy

Jane Lewis and Wendy Higman





KEY:

<i>Farmed Shellfisheries</i>		<i>Natural Shellfisheries</i>	
	Mussels (<i>Mytilus edulis</i>)		Flat Oysters (<i>Ostrea edulis</i>)
	Pacific Oysters (<i>Crassostrea gigas</i>)		Cockles (<i>Cerastoderma edule</i>)
			Water sampling point
			Water and flesh sampling point

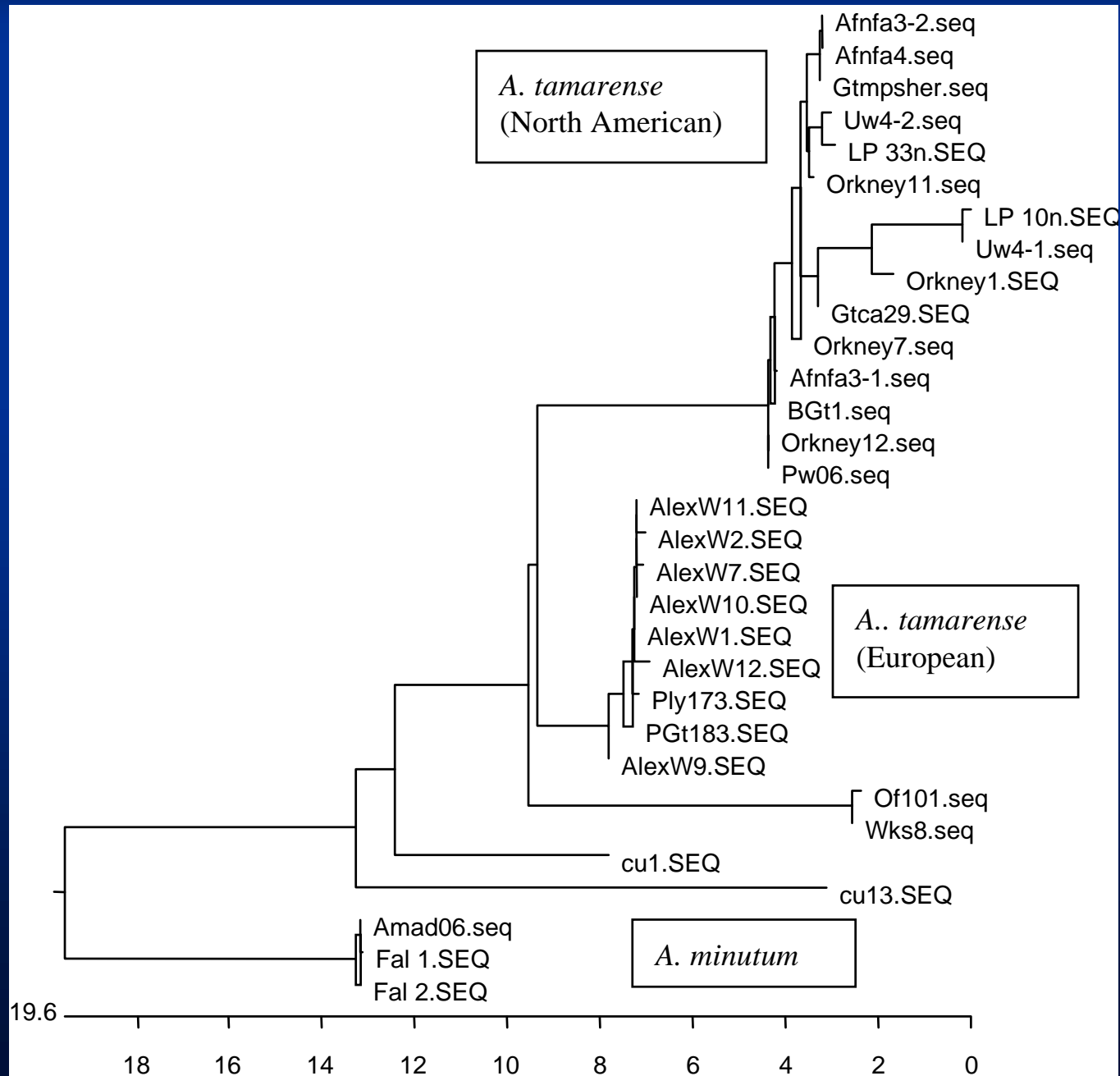


Results

- *Alexandrium* sp. (20-25um)
- *Alexandrium* sp. (>30um)

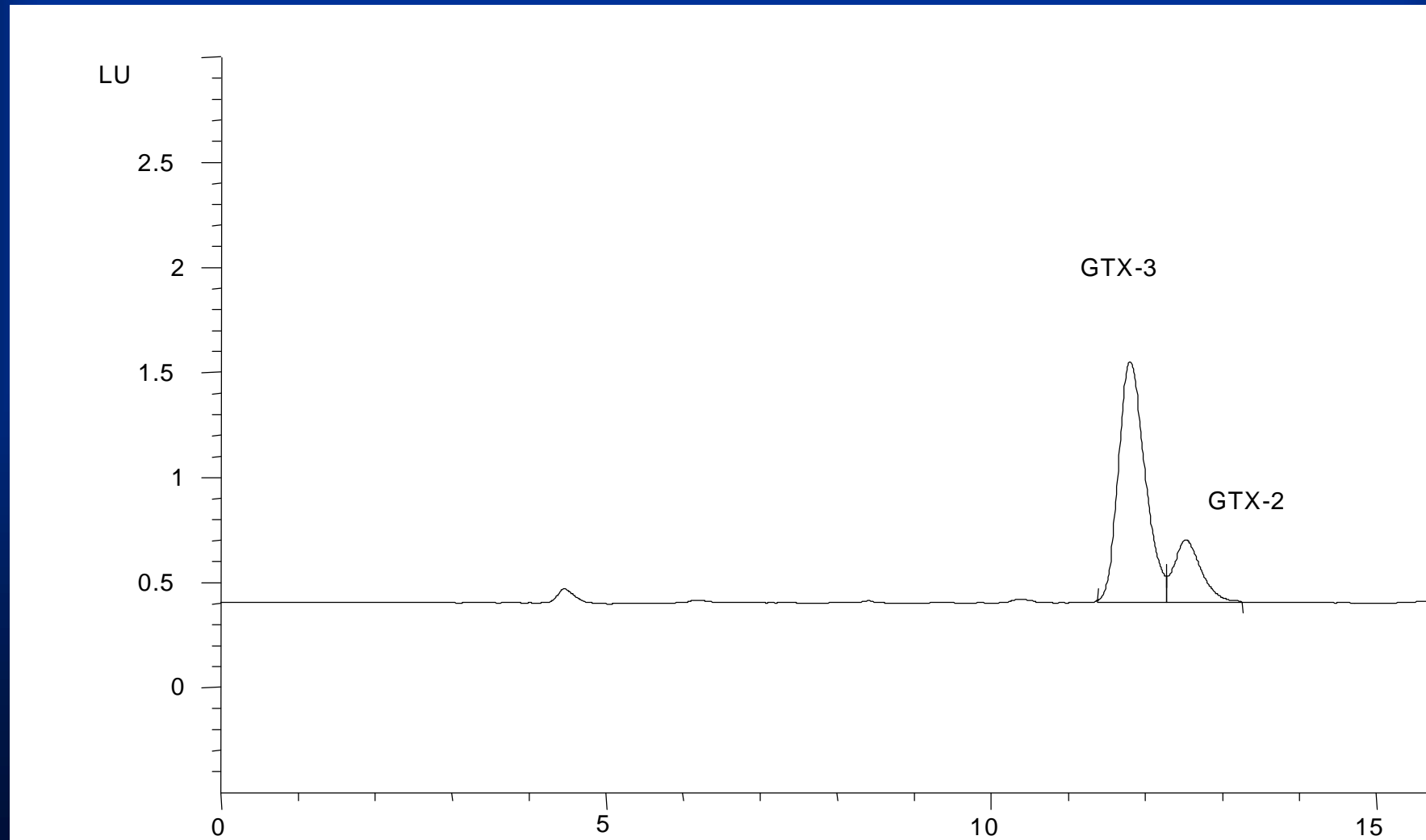






Results

PSP toxins in *A. minutum* culture



Results

Dinophysis acuminata

Dinophysis acuta

Dinophysis rotunda

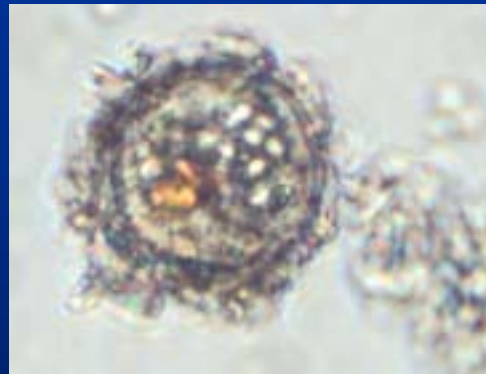


Results

- *Pseudo-nitzschia* sp. (l=50um, w=<2.5um)
- *Pseudo-nitzschia* sp.(l=100um, w=7.5um)

Preliminary results from sediment work

- ?*A. minutum* Cysts at Turnaware and Percuil



- *A. tamarense* Cysts at Percuil

